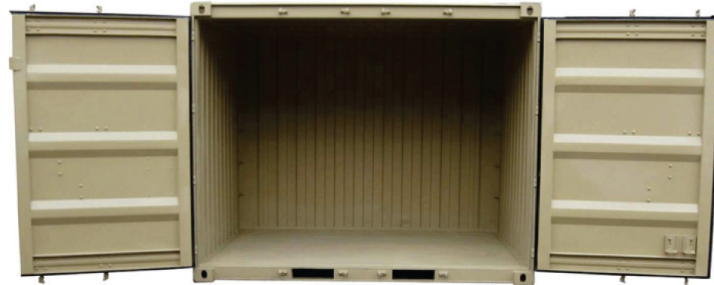




# SEA BOX<sup>®</sup>

## 10' X 8'6" Bicon Dry Freight Bicon Container with Double Cargo Doors On 10' Side

**SB843-6**  
 10' X 8'6" Bicon Dry Freight Bicon Container  
 with Double Cargo Doors On 10' Side



One Full Side Opening 10' x 8' 6" Bicon Dry Freight ISO Cargo Container

### PRODUCT FEATURES

#### STANDARD FEATURES

- Corrugated steel sides and roof
- Steel floors, forklift tested to 16,000 lbs. per 44 square inches
- Tie down steel lashing rings, 4,000 lbs. cap. each
- (4) way forklift pockets
- Vents, (2) each
- One double side door

#### OPTIONAL FEATURES

- Connecting couplers, (2) per Bicon
- Connecting coupler storage bracket, (1) each
- Manifest box, (2) each
- Heavy duty adjustable E-Track System, (4) sets
- Decking and shoring beams, (16) each
- Non-Absorbing Composite Shelves

100815-R00

**ALL NEW CONTAINERS ARE MANUFACTURED TO THE LATEST ISO STANDARD**

SB843.6	LENGTH		HEIGHT		WIDTH		DOOR OPENING	
	Exterior	Interior	Exterior	Interior	Exterior	Interior	Height	Width
<b>Ft. in.</b>	9' 9 3/4"	9' 7 43/64"	8' 6"	7' 11 3/64"	8' 0"	7' 6 59/64"	7' 7 1/16"	9' 5 57/64"
<b>Metric</b>	2,991	2,938	2,591	2,414	2,438	2,310	2,313	2,893
	TARE WEIGHT		PAYLOAD		GROSS WEIGHT		CUBIC CAPACITY	
<b>Lbs.</b>	3,460		23,000		26,460		579 Cu. Ft.	
<b>Kgs.</b>	1,570		10,430		12,000		16.38 Cu. M.	

ISO 9001



CERTIFIED QUALITY MANAGEMENT SYSTEM

GSA CONTRACT # GS-02F-0024P  
**Advantage!**<sup>™</sup>

ALL DIMENSIONS AND WEIGHTS ARE NOMINAL AND SUBJECT TO MINOR VARIATIONS THAT MAY OCCUR DURING THE MANUFACTURING PROCESS