



# ENHANCED CONTAINER SYSTEMS

*SEA BOX, Inc. is a Proud United States Small Business Manufacturer!*



1 SEA BOX Drive, East Riverton, NJ 08077  
Phone: 856-303-1101 Fax: 856-303-1501  
[www.seabox.com](http://www.seabox.com)

# SEA BOX Containers



SEA BOX is a world leader in container design, custom modification and manufacturing. Our containers are used by all branches of the military and commercial customers throughout the world.



We now offer enhanced containers that feature removable storage modules. These drawer and shelf modules provide a way to effectively use containers for the transport and storage of small, medium and large sized parts, tools, supplies and other materials that may be needed in the field.

Storage modules are secured in the containers with adaptor plates and can be used in Quadcons, Tricons, Bicons and 20' ISO.

# Selecting the Container and Removable Storage Modules That is Right for Your Needs



- **STEP 1:** Select the enhanced container size that fits your storage and transportation needs
  - Choose Quadcon, Tricon, Bicon, or 20' ISO Containers
- **STEP 2:** Decide if you need Removable Storage Modules on one or both sides of your container. Selecting a Module for just one side allows for bulk items to be stored in the same container. Selecting Modules for both sides maximizes storage of small, medium and large items, parts or supplies.

# Selecting the Container and Removable Storage Modules That is Right for Your Needs



- **STEP 3:** Evaluate the items, parts or supplies that will be stored and transported to determine the correct type of Removable Storage Modules.
  - Small and medium sized items (tools, medical supplies, small replacement parts, etc.) will be stored and transported best in Drawer Modules
  - Larger items (batteries, engines, etc.) will be stored and transported best in Glide Out Shelving Modules



# Selecting the Container and Removable Storage Modules That is Right for Your Needs



- **STEP 4:** Select your storage modules and build your enhanced container system!

Modules are available in the following sizes to match the container size and number of adaptor plates you've selected:

- Quadcon size (fits in Quadcons or Bicons). Select one module per adaptor plate.
- Tricon Half-Width size (fits Tricons and 20' ISO containers). Select two modules per adaptor plate.
- Tricon Full-Width size (fits Tricons and 20' ISO containers). These are Glide Out Shelving Modules. Select one per adaptor plate.

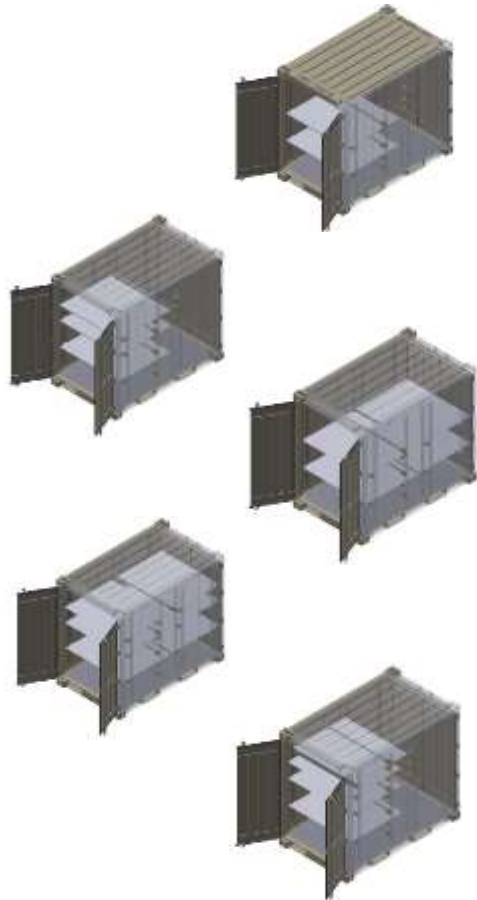
**You can build your enhanced containers with variety of modules to accommodate all sized items!**





# ADDITIONAL ENHANCED CONTAINER STORAGE OPTIONS

# Quadcons With Adjustable Shelving



Product	SEA BOX P/N	NSN
Quadcon With 2 Adjustable Shelves	<a href="#">SB812.ST.SH2.DLA</a>	8150-01-618-9970
	<a href="#">SB812.SG.SH2.DLA</a>	8150-01-618-9302
Quadcon With 3 Adjustable Shelves	<a href="#">SB812.ST.SH3.DLA</a>	8150-01-619-0043
	<a href="#">SB812.SG.SH3.DLA</a>	8150-01-618-9359
Quadcon With 4 Adjustable Shelves	<a href="#">SB812.ST.SH2+2.DLA</a>	8150-01-619-0006
	<a href="#">SB812.SG.SH2+2.DLA</a>	8150-01-618-9354
Quadcon With 6 Adjustable Shelves	<a href="#">SB812.ST.SH3+3.DLA</a>	8150-01-619-0069
	<a href="#">SB812.SG.SH3+3.DLA</a>	8150-01-618-9364
Quadcon With 4 Adjustable Shelves	<a href="#">SB812.ST.SH4.DLA</a>	8150-01-619-0131
	<a href="#">SB812.SG.SH4.DLA</a>	8150-01-618-9724
Quadcon With 8 Adjustable Shelves	<a href="#">SB812.ST.SH4+4.DLA</a>	8150-01-619-0157
	<a href="#">SB812.SG.SH4+4.DLA</a>	8150-01-618-9736

# Quadcon Additional Storage Features



**Common 10 Quadcon**

P/N: [SB812.ST.COM10.DLA](#)

NSN: 8150-01-618-9739

P/N: [SB812.SG.COM10.DLA](#)

NSN: 8150-01-618-9254



**Common 12 Quadcon**

P/N: [SB812.ST.COM12.DLA](#)

NSN: 8150-01-618-9761

P/N: [SB812.SG.COM12.DLA](#) 8

NSN: 150-01-618-9261



**Quadcon with 5-Drawer Cabinet**

P/N: [SB812.ST.CT1-5D.DLA](#)

NSN: 8150-01-618-9788

P/N: [SB812.SG.CT1-5D.DLA](#)

NSN: 8150-01-618-9273



**Quadcon with 6-Drawer Cabinet**

P/N: [SB812.ST.CT1-6D.DLA](#) NSN: 8150-01-618-9832

P/N: [SB812.SG.CT1-6D.DLA](#) NSN: 8150-01-618-9277



**Quadcon with Two 6-Drawer Cabinets (one on each side)**

P/N: [SB812.SG.CT1-6D.DLA](#) NSN: 8150-01-618-9848

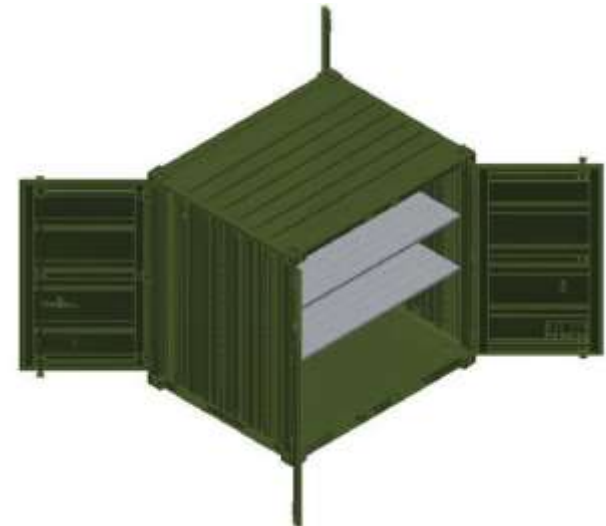
P/N: [SB812.SG.CT2-6D.DLA](#) NSN: 8150-01-618-9284



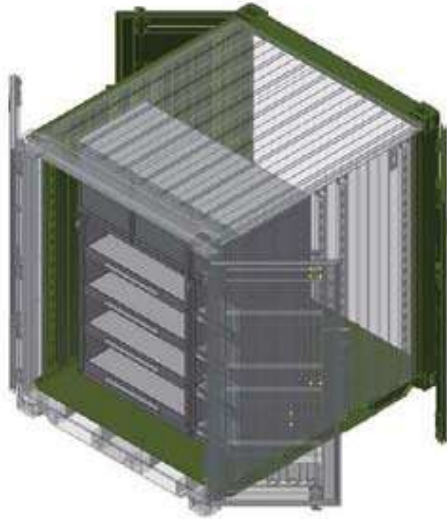
# Tricons With Adjustable Shelving



Product	SEA BOX P/N	NSN
Tricon (Type II) with 1 Transverse Shelf Deck	<a href="#">SB822.0.ST.SH1+1.DLA</a>	8150-01-619-8940
	<a href="#">SB822.0.SG.SH1+1.DLA</a>	8150-01-619-8709
Tricon (Type II) with 2 Transverse Shelves	<a href="#">SB822.0.ST.SH2.DLA</a>	8150-01-619-8233
	<a href="#">SB822.0.SG.SH2.DLA</a>	8150-01-619-9439
Tricon (Type II) with 4 Transverse Shelves	<a href="#">SB822.0.ST.SH4.DLA</a>	8150-01-619-8245
	<a href="#">SB822.0.SG.SH4.DLA</a>	8150-01-619-9456
Tricon (Type IV) – Full Width Cargo Doors on Both Ends) with 2 Longitudinal Shelf Halves	<a href="#">SB825.0.ST.SH2.DLA</a>	8145-01-619-7688
	<a href="#">SB825.0.SG.SH2.DLA</a>	8145-01-619-7638
	<a href="#">SB825.0.SW.SH2.DLA</a>	8145-01-619-7660



# Tricons with Storage Cabinets



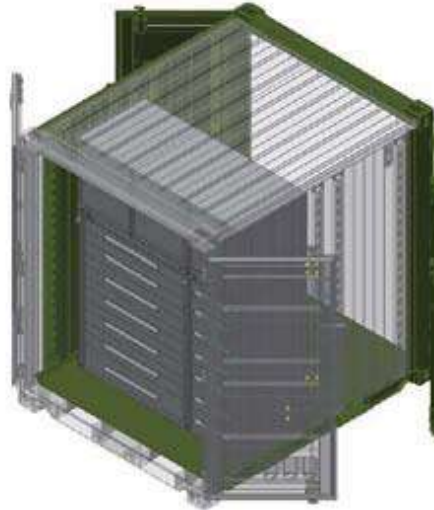
**Tricon (Type II) with Modular Cabinet Design Including 2 Base Cabinets with 4 each Roll Out Shelves and 2 Swing-Door Cabinets**

P/N: [SB822.0.ST.CT44RO.DLA](#)

NSN: 8150-01-619-9948

P/N: [SB822.0.SG.CT44RO.DLA](#)

NSN: 8150-01-619-7801



**Tricon (Type II) with Modular Cabinet Design Including 14 Drawers and 2 Swing-Door Cabinets**

P/N: [SB822.0.ST.CT47D.DLA](#)

NSN: 8150-01-620-0078

P/N: [SB822.0.SG.CT47D.DLA](#)

NSN: 8150-01-619-7983



**Tricon (Type II) with Modular Cabinet Design Including 8 Drawers and 2 Swing-Door Cabinets**

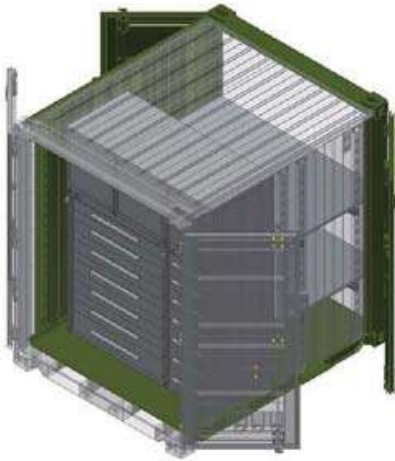
P/N: [SB822.0.ST.CT2-4D.DLA](#)

NSN: 8150-01-619-9869

P/N: [SB822.0.SG.CT2-4D.DLA](#)

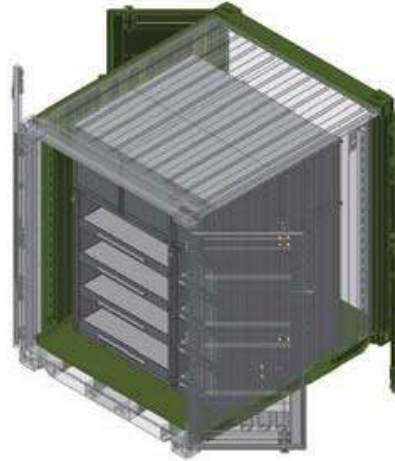
NSN: 8150-01-619-7755

# Tricons with Storage Cabinets (Cont'd)



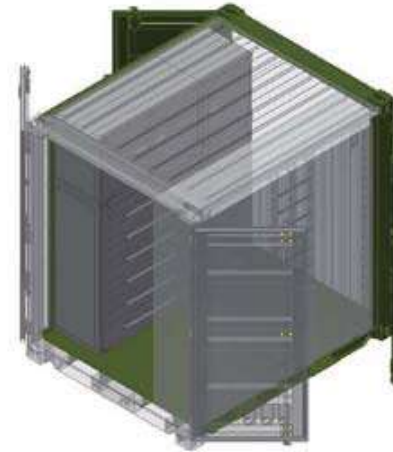
**Tricon (Type II) with Modular Cabinet Design Including 14 Drawers and 2 Swing-Door Cabinets with 2 Half-Shelves on Opposite Side**

P/N: [SB822.0.ST.CT4-7D.SH2.DLA](#)  
NSN: 8150-01-620-0132  
P/N: [SB822.0.SG.CT4-7D.SH2.DLA](#)  
NSN: 8150-01-619-8154



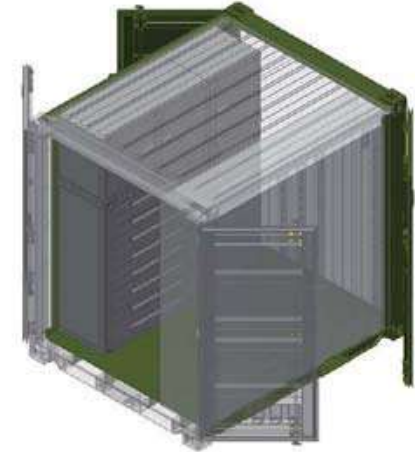
**Tricon (Type II) with Modular Cabinet Design on Both Sides Including a Total of 4 Base Cabinets with 8 Roll-Out Shelves Each and 4 Swing-Door Top Cabinets**

P/N: [SB822.0.ST.CT8-4RO.DLA](#)  
NSN: 8150-01-620-0174  
P/N: [SB822.0.SG.CT8-4RO.DLA](#)  
NSN: 8150-01-619-8248



**Tricon (Type II) with Modular Cabinet Design Including a Total of 4 Base Cabinets with 24 Drawers and 4 Swing-Door Top Cabinets**

P/N: [SB822.0.ST.CT86.DLA](#)  
NSN: 8150-01-619-9454  
P/N: [SB822.0.SG.CT86.DLA](#)  
NSN: 8150-01-619-8484



**Tricon (Type II) with Modular Cabinet Design Including a Total of 4 Base Cabinets with 36 Drawers and 4 Swing-Door Top Cabinets**

P/N: [SB822.0.ST.CT88.DLA](#)  
NSN: 8150-01-619-9448  
P/N: [SB822.0.SG.CT88.DLA](#)  
NSN: 8150-01-619-8660

# Tricons with Storage Cabinets (Cont'd)



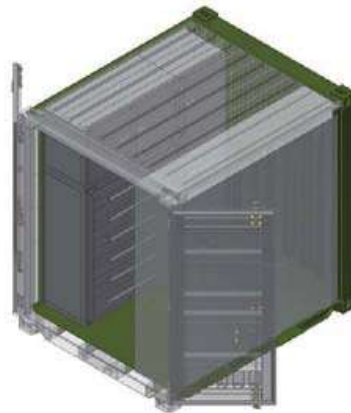
**Tricon (Type I) with 12 Cabinets**

P/N: [SB821.0.ST.D2A-D2B.DLA](#)

NSN: 8150-01-619-6929

P/N: [SB821.0.SG.D2A-D2B.DLA](#)

NSN: 8150-01-619-6187



**Tricon (Type I) with Modular Cabinet Design Including 24 Total Drawers and 4 Swing-Door Cabinets**

P/N: [SB821.0.ST.CT86D.DLA](#)

NSN: 8150-01-619-6804

P/N: [SB821.0.SG.CT86D.DLA](#)

NSN: 8150-01-619-5410



**Tricon (Type I) with Modular Cabinet Design Including 36 Total Drawers and 4 Swing-Door Cabinets**

P/N: [SB821.0.ST.CT88D.DLA](#)

NSN: 8150-01-619-6840

P/N: [SB821.0.SG.CT88D.DLA](#)

NSN: 8150-01-619-6162



**Tricon (Type I) with 4 Drawers and 1 Swing-Door Cabinet and 8 M16/M14 Gun Racks to hold a total of 80 Rifles**

P/N: [SB821.0.ST.MP.DLA](#)

NSN: 8150-01-619-7028

P/N: [SB821.0.SG.MP.DLA](#)

NSN: 8150-01-619-6339

# Tricon Insulated Shelters



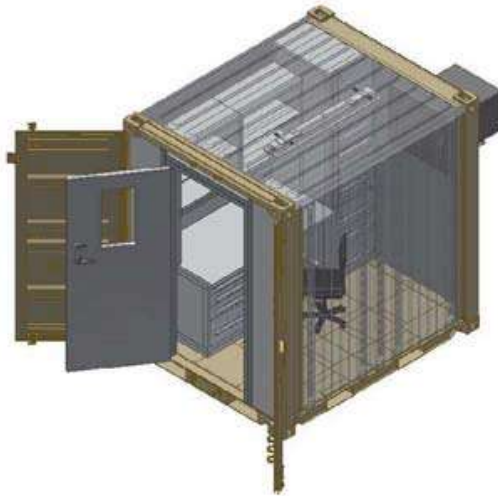
## Tricon (Type I) Insulated Climate Controlled Shelter

P/N: [SB821.0.ST.OP.DLA](#)

NSN: 8145-01-619-7247

P/N: [SB821.0.SG.OP.DLA](#)

NSN: 8145-01-619-6447



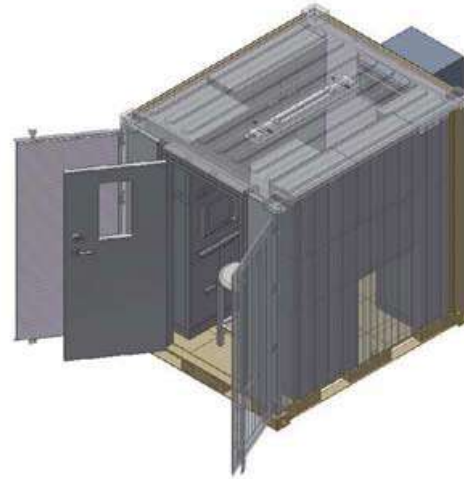
## Tricon (Type I) Insulated Climate Controlled Shelter with Office Package 1

P/N: [SB821.0.ST.OP1.DLA](#)

NSN: 8145-01-619-7513

P/N: [SB821.0.SG.OP1.DLA](#)

NSN: 8145-01-619-6512



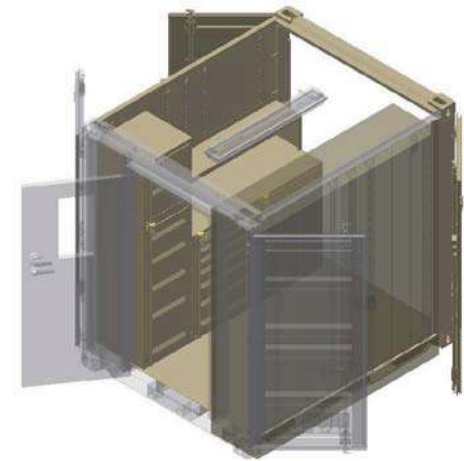
## Tricon (Type I) Insulated Climate Controlled Shelter with Office Package 2

P/N: [SB821.0.ST.OP2.DLA](#)

NSN: 8145-01-619-7565

P/N: [SB821.0.SG.OP2.DLA](#)

NSN: 8145-01-619-6549



## Tricon (Type II) Insulated Workshop Shelter

P/N: [SB822.0.ST.WS.DLA](#)

NSN: 8145-01-619-8256

P/N: [SB822.0.SG.WS.DLA](#)

NSN: 8145-01-619-9501

# Bicon With Shelf



**10' x 8' Bicon (Type II) with Double Doors on Both Ends and Full Shelf**

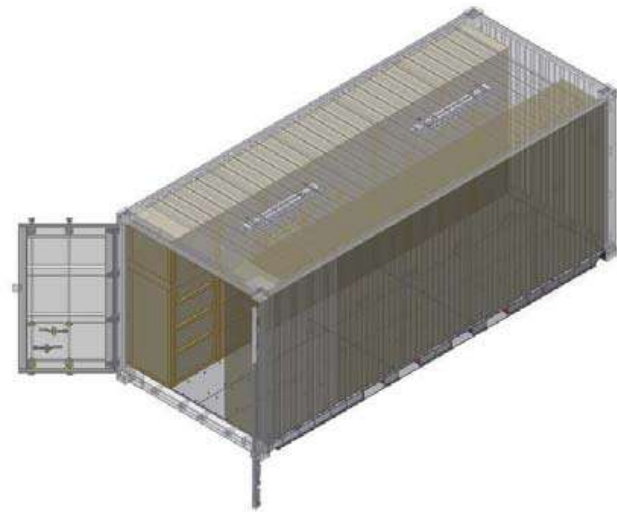
P/N: [SB842.0.ST.2LSH.DLA](#)

NSN: 8150-01-619-0321

P/N: [SB842.0.ST.2LSH.DLA](#)

NSN: 8150-01-619-0236

# 20 Foot ISO Containers with Cabinets



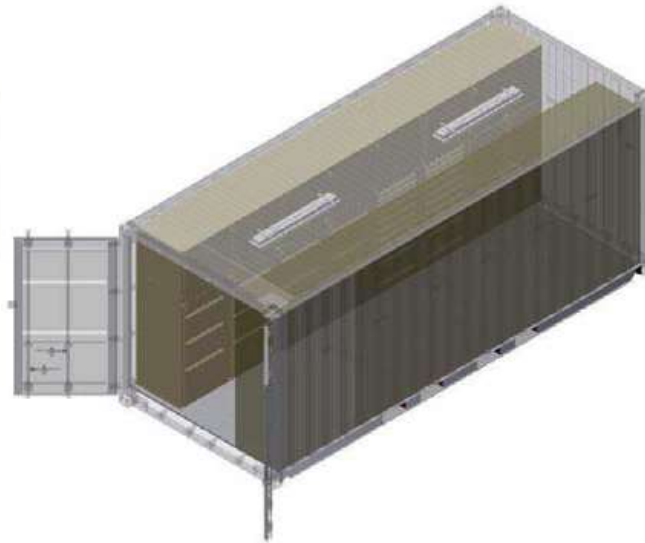
**20' x 8' (Type I) ISO Container with  
22 Cabinet Package**

P/N: [SB861.0.ST.CT22-4D.3A-5B.DLA](#)

NSN: 8150-01-619-0337

P/N: [SB861.0.SG.CT22-4D.3A-5B.DLA](#)

NSN: 8150-01-619-0360



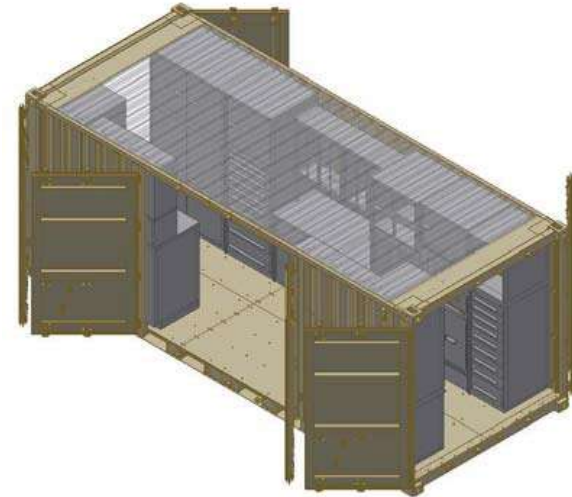
**20' x 8' Type I) ISO Container with  
28 Cabinet Package**

P/N: [SB861.0.ST.CT28-4D.4A-4B.DLA](#)

NSN: 8150-01-619-0462

P/N: [SB861.0.SG.CT28-4D.4A-4B.DLA](#)

NSN: 8150-01-619-0360



**20' X 8' Dry Freight ISO (Type III)  
ISO Container Workshop**

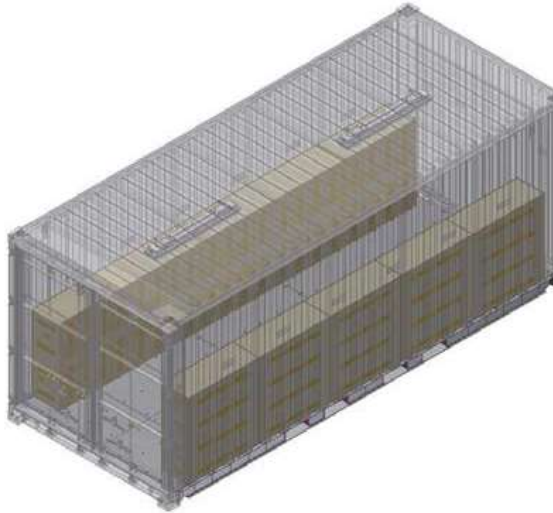
P/N: [SB863.0.WS.ST.DLA](#)

NSN: 8150-01-619-0838

P/N: [SB863.0.WS.SG.DLA](#)

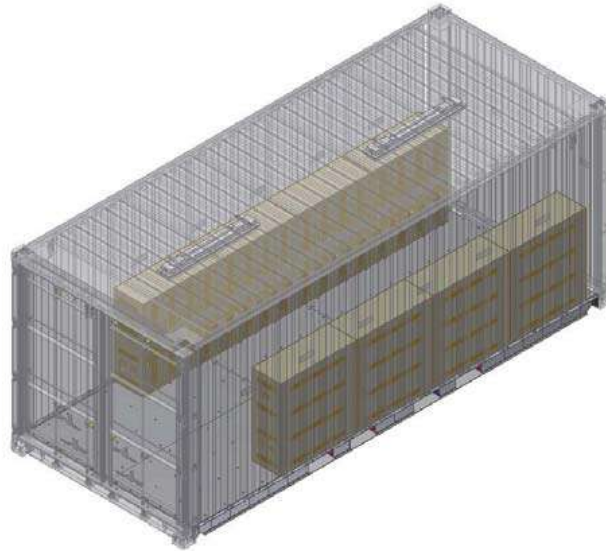
NSN: 8150-01-619-0829

# 20 Foot ISO Containers with Weapons Racks



**20' X 8' (TYPE I) ISO Container with 10-M16 Racks to store up to 100 M16 Rifles**

P/N: [SB861.ST.MP.DLA](#)  
NSN: 8150-01-619-0568  
P/N: [SB861.SG.MP.DLA](#)  
NSN: 8150-01-619-0486



**20' X 8' (TYPE I) ISO Container with 8-M16 Racks to store up to 60 M16 Rifles**

P/N: [SB861.ST.MP2.DLA](#)  
NSN: 8150-01-619-0648  
P/N: [SB861.SG.MP2.DLA](#)  
NSN: 8150-01-619-0545



**20' X 8' (TYPE II) ISO Container with 13 Modular Weapons Racks with Caster Trays**

P/N: [SB862.6.ST.WR.DLA](#)  
NSN: 8150-01-619-0807  
P/N: [SB862.6.SG.WR.DLA](#)  
NSN: 8150-01-619-0782



# 20' Container Workshops



**20' x 8' ISO Common 32 Workshop Shelter Featuring Shelving, Work Benches and Work Surfaces**

P/N: [SB866.0.ST.PLSC32.DLA](#)

NSN: 8150-01-619-0885

P/N: [SB866.0.SG.PLSC32.DLA](#)

NSN: 8150-01-619-0864



**Two Container (20' x 8') Mobile Machine Shop Featuring Mill and Lathe**

P/N: [SB866.0.PLSMMS.ST.DLA](#)

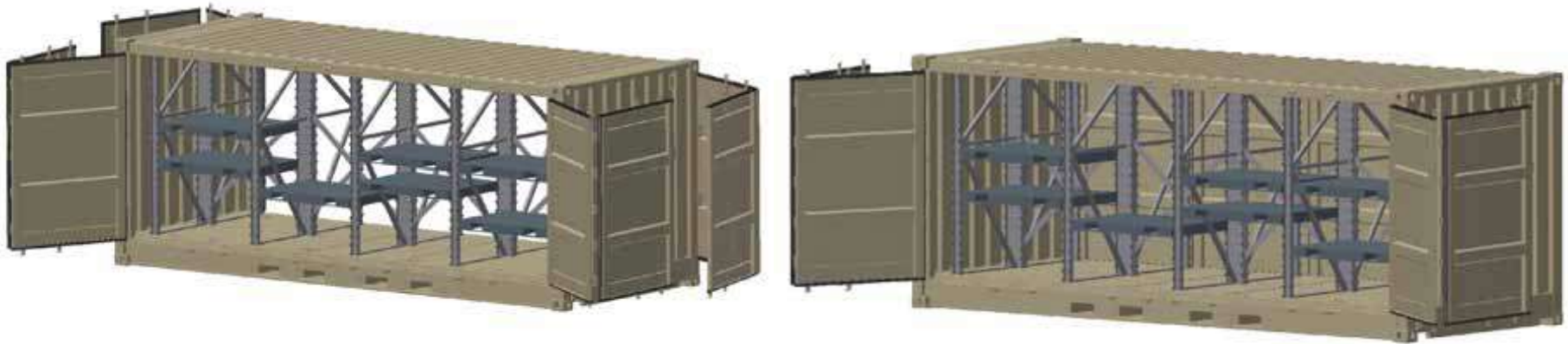
NSN: 8150-01-619-0944

P/N: [SB866.0.PLSMMS.SGDLA](#)

NSN: 8150-01-619-0901



# 20' Container with Palletized Racks



## Two Full Side Opening 20' X 8' 6" ISO Cargo Container with Palletized Adjustable Racks

System consist of mounted columns with 24 movable flat pallets, retaining brackets and tie down feature. Pallets are fully removable via forklift and entire system is reconfigurable to adjust to changing storage needs.

P/N: [SB892.6.AR.DLA](#)  
NSN: 8145-01-623-5577

# Collapsible Redeployable Shelters



**Collapsible Redeployable Shelter (CRS)**  
Shelter consists of two collapsible containers secured together to form a 320 square feet of living space.

P/N: [SB3893.7.CRS-CPS.DLA](#)

NSN: 5411-01-623-2951

- Units fold flat and lock together in groups of four to form a Twenty-foot Equivalent Unit (TEU)
- Easily transportable and re-deployable worldwide
- Fully insulated wall panel design for optimum energy efficiency
- Includes Environmental Control Unit and fresh air ventilator
- Stackable for multi-story use
- Reconfigurable for multi-purpose use
- Numerous add-on items available to create multi-story building groups

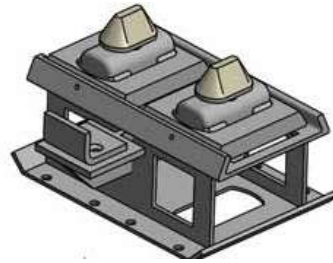


# Add-on Features for CRS Building Groups



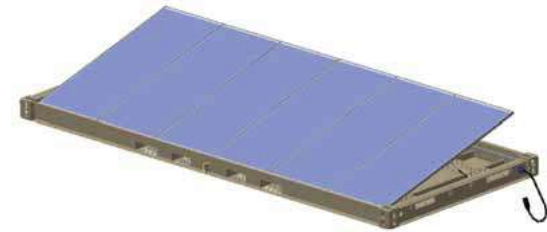
**CRS Type B Unit with Two Open Sides.**  
Can be added to CRS-CPS to create  
larger interior living space

P/N: [SB3893.7.CRS-B.DLA](#)  
NSN: 5411-01-623-2698



**Steel Footer Piers to support CRS Units**  
(Set of 2)

P/N: [SB3896.CRS-FP.DLA](#)  
NSN: 5411-01-623-3506



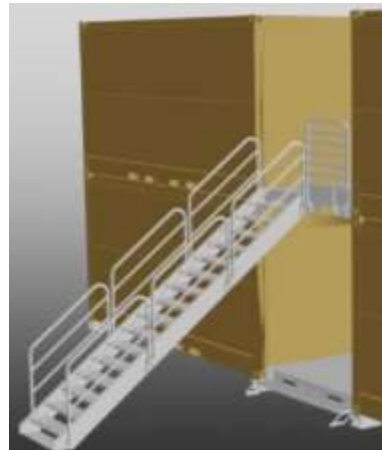
**Solar Array Platforms with Six Custom-  
Sized Solar Panels. Connect to CRS's for  
additional energy efficiency**

P/N: [SB3896.CRS-SPL.DLA](#)  
NSN: 5411-01-623-3824



**8'0 High Quadcon, Insulated Vestibule**

P/N: [SB3896.CRS-QV.DLA](#)  
NSN: 5411-01-623-3787



**16 Step Staircase with 6 Hand Rails  
& 1 Mezzanine Guard Rail**

P/N: [SB3896.CRS-ST.DLA](#)  
NSN: 5411-01-623-3898



**Upper (Mezzanine) or Lower Level  
Walkway**

P/N: [SB3896.CRS-PL.DLA](#)  
NSN: 5411-01-623-3773

# Add-on Features for CRS Building Groups



**Corner Fitting Shelves (Set of Four). Insert into CRS top corner block to support Upper Level Mezzanine Walkway**

P/N: [SB3896.CRS-CFS.DLA](#)  
NSN: 5411-01-623-3113



**100 Amp Distribution Panel**  
P/N: [SB3896.CRS-100A.DLA](#)  
NSN: 5411-01-623-2971



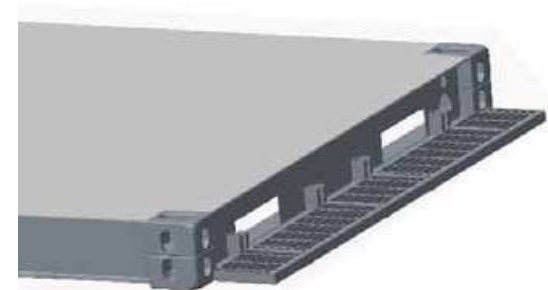
**200 Amp Distribution Panel**  
P/N: [SB3896.CRS-200A.DLA](#)  
NSN: 5411-01-623-3015



**Exterior LED Wall Pack, 1<sup>st</sup> Floor**  
P/N: [SB3896.CRS-LWP1.DLA](#)  
NSN: 6230-01-623-3555



**1 Exterior LED Wall Pack, 2<sup>nd</sup> Floor**  
P/N: [SB3896.CRS-LWP2.DLA](#)  
NSN: 6230-01-623-3565



**Single Step, 90" Wide for Lower Level Walkway (Set of 2)**  
P/N: [SB3896.CRS-SST.DLA](#)  
NSN: 5411-01-623-3860

# Expandable Shelters



## Transport Mode



**Two-Side Expandable Bicon Shelter**

P/N: [SB841.0.3S1.DLA](#)

NSN: 5411-01-623-5137



**20' One-Side Expandable, Folding Shelter**

P/N: [SB3892.0.2S1.DLA](#)

NSN: 5411-01-623-2540



**20' Two-Side Expandable, Folding Shelter**

P/N: [SB3892.0.3S1.DLA](#)

NSN: 5411-01-623-2636

## Deployed Mode



# Command & Control Shelters



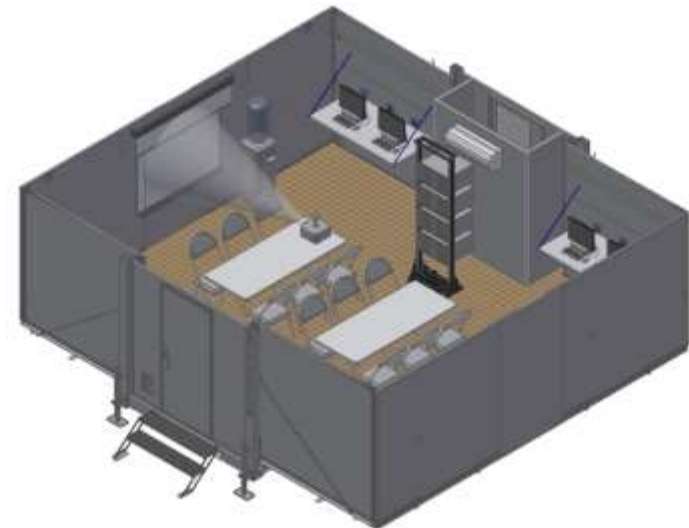
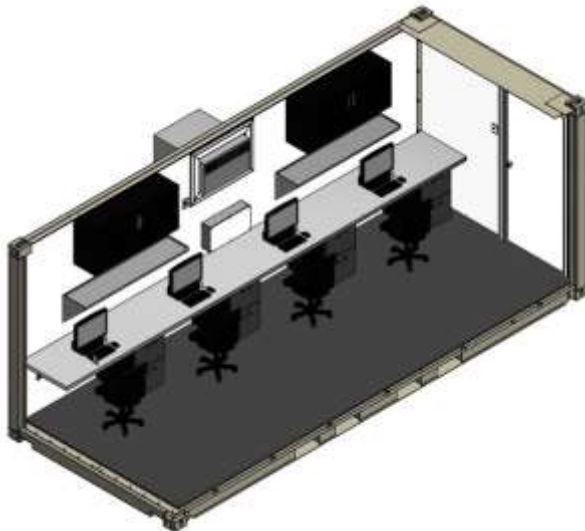
**20' Command Center with Office Package**

P/N: [SB861.0.3C.DLA](#)  
NSN: 5411-01-623-5161



**20' Two-Side Expandable Folding Command & Control Shelter with Office Package**

P/N: [SB3892.0.3S1.3C.DLA](#)  
NSN: 5411-01-623-2604



# Containerized Housing Unit



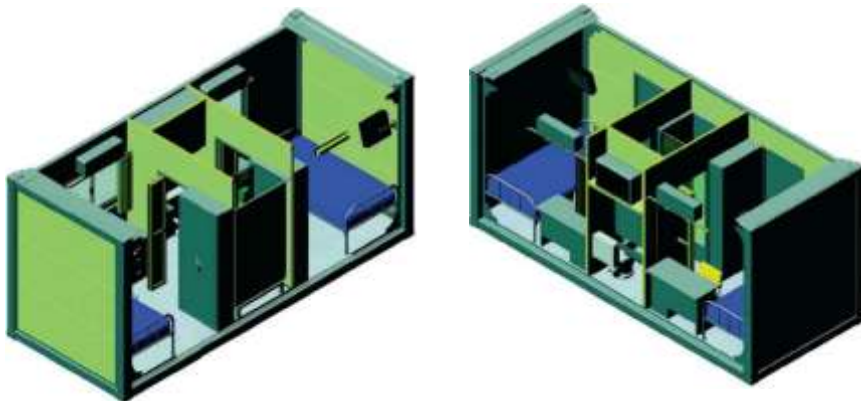
## Containerized Housing Unit – 2 Man

P/N: [SB861.9.CHU-2M.DLA](#)

NSN: 8145-01-623-5550

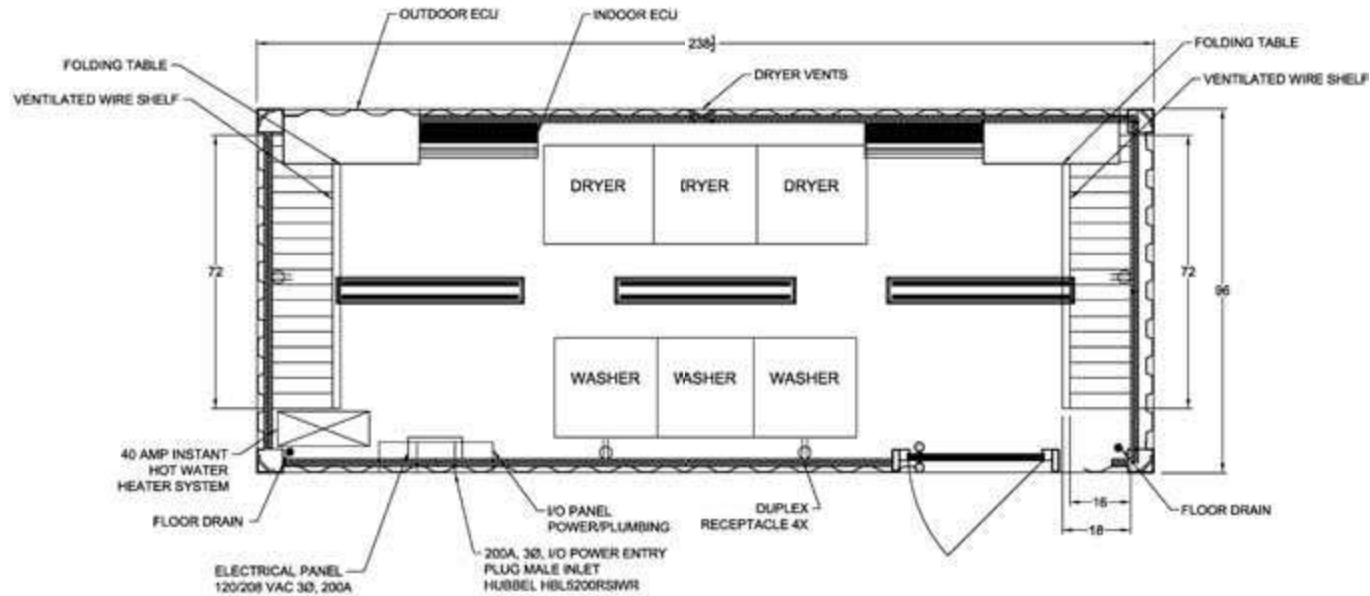
20'L x 8'W x 9'6"H Shelter with 2 Bedrooms and a shared three-fixture bathroom.

- Minimal on-site setup and preparation work
- Fully insulated walls and ceiling
- Interior lighting, electric, plumbing and water heater
- Interior features include two beds, chests, desks, TV's, refrigerators and chairs





# 20' x 8'6" Laundry Shelter



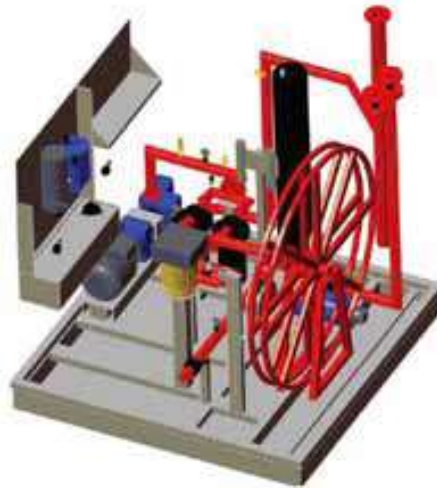
## Laundry Shelter

P/N: [SB861.6.6WD.DLA](#)

NSN: 8145-01-623-5465

Insulated shelter with three commercial-grade washers and three commercial-grade dryers with all required plumbing and two split-type HVAC units

# Tricon Container with Jet/Helicopter Refueling Cabinet



## Tricon ISO Container with Jet/Helicopter Refueling Cabinet

P/N: [SB822.0.ST.JETA1.DLA](#)

NSN: 8150-01-623-5114

[SB822.0.SG.JETA1.DLA](#)

NSN: 8150-01-623-4873

Refueling cabinet built in Tricon. Helicopter liftable. Suitable for jet fuels

# Water Bladder for 20' x 8'6" Container



## Water Bladder

P/N: [SB861.6.CWB.DLA](#)

NSN: 5410-01-623-5482

Water bladder with strength bands woven into outer polypropylene sleeve with patented compression fitted flange and valve

Suitable for food-grade, chemical and pharmaceutical products



# 20' ISO Container Mobilizer



## 20' Container Mobilizer

P/N: [SB486.DLA](#)

NSN: 8145-01-623-4123

Designed to transport one standard 20' container on highway (50 mph), gravel roads (35 mph), or cross-country (15 mph)



# Shoring & Decking Beams



Beams engage onto vertical “E” track system and supports shelves for cargo storage

**Shoring & Decking Beam – Quadcon Size**

P/N: [SB6000](#)

**Shoring & Decking Beam – Tricon Size**

P/N: [SB6200](#)

**Shoring & Decking Beam – Fits Bicon (Type 2) and 20' ISO Containers**

P/N: [SB6400](#)

NSN: 8115-01-596-0412



# Parts & Accessories



**ISO Lifting Lug**  
P/N: [SB72009.DLA](#)  
NSN: 8145-01-623-4570



**6" Swivel Polyurethane Caster**  
P/N: [SB5906.DLA](#)  
NSN: 5340-01-623-4536



**6" Swivel Caster Wheel with Brake and Welded Deckmount Twistlock**  
P/N: [SB5901.DLA](#)  
NSN: 5340-01-623-4515



**Horizontal Twistlock with Adapter Plate**  
P/N: [SB241.DLA](#)  
NSN: 8145-01-623-2397



**Deck Mount Twistlock**  
P/N: [SB1470.DLA](#)  
NSN: 8145-01-623-2176



**Grounding-Rod Kit**  
P/N: [SB575.DLA](#)  
NSN: 5977-01-623-4323



**Vertical Twistlock Stacker**  
P/N: [SB441.DLA](#)  
NSN: 8145-01-623-4025



**Bridge Fitting**  
P/N: [SB5400.DLA](#)  
NSN: 8145-01-623-4228

# Container Shelf & Bracket System



P/N: [SB2212.DLA](#)  
NSN: 8145-01-623-2282



P/N: [SB3212.DLA](#)  
NSN: 8145-01-623-2528



P/N: [SB3210.DLA](#)  
NSN: 8145-01-623-2494



P/N: [SB4000C.DLA](#)  
NSN: 8145-01-623-3910



P/N: [SB5000C.DLA](#)  
NSN: 8145-01-623-4164



**SEA BOX, Inc.**

**1 SEA BOX Drive**

**East Riverton, NJ 08077-1910**

**Phone: 856-303-1101 Fax: 856-303-1501**

**Email: [Sales@seabox.com](mailto:Sales@seabox.com)**