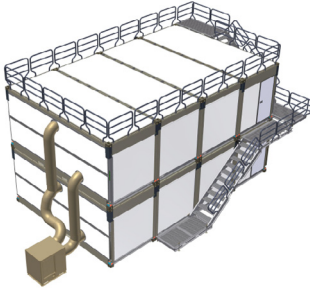




20' x 9'0" Collapsible Re-Deployable Shelter 4B4C



FEATURES

- Lightweight, Collapsible Shelter - can be stacked 4-high to make a 20' ISO module 8' high for transport
- Designed to meet Military requirements for rapid deployment
- 1 Truck delivery
- Collapsible end walls and one side wall
- (2) Levels of floor space 20' x 32' each:
 - (4) SB3893.7.CRS-B (middle units, stacked 2-high)
 - (4) SB3893.7.CRS-C (end units, stacked 2-high)
- (2) ways of egress from each level
- (2) Aluminum stairs/walkway for upper level or roof access
- Durable, non-slip, waterproof interior floor coating

TRANSPORTABILITY

- (8) Shelters on a truck or C-130 Aircraft

CONSTRUCTION

- Unit, 9'0" high, can be stacked 4-high
- (2) CRS-B and (2) CRS-C
- 3" Urethane foam sandwiched between galvanized steel construction for hardened personnel shelter protection
- Corrosion resistant side panel (inner/outer) sheets and frame
- Smooth sides and pre-painted
- 20,000 lbs. Tare weight

ELECTRICAL

- (2) overhead lights
- Flush-mounted, (2) sockets and (1) switch
- Plug and play electric mounted to interior ceiling, all levels

ELECTRICAL (Cont'd)

- 120/208 VAC breaker panels with
 - (2) 20A breakers on each level, includes 120 VAC & (8) USB charging outlets on each level
- 4' LED light fixtures, (8) per level and (4) switches per level

INSULATION

- Rigid CFC-free polyurethane foam insulation
- Heat Transmission Coefficient Roof/Floor: 0.38 W/mK
- Heat Transmission Coefficient Walls: 0.60 W/mK
- R22 Insulation
- Combination Heating/Cooling Unit (110V)

Note: Optional features available up request

ALL NEW CONTAINERS ARE MANUFACTURED TO THE LATEST ISO STANDARD

	LENGTH		HEIGHT		WIDTH (per floor)	
	Exterior	Interior	Exterior	Interior	Exterior	Interior
Ft in	19' 10 1/2"	19' 3/4"	9' 0"	8' 1/2"	32'	31' 3 1/8"
Metric	6,058	5,810	2,743	2,451	9,754	9,528

ALL DIMENSIONS AND WEIGHTS ARE NOMINAL AND SUBJECT TO MINOR VARIATIONS THAT MAY OCCUR DURING THE MANUFACTURING PROCESS



SB3893.7.CRS-4B4C
20' x 9'0" Collapsible Re-Deployable Shelter 4B4C

112311-R01

ISO 9001:2008



CERTIFIED QUALITY
MANAGEMENT SYSTEM