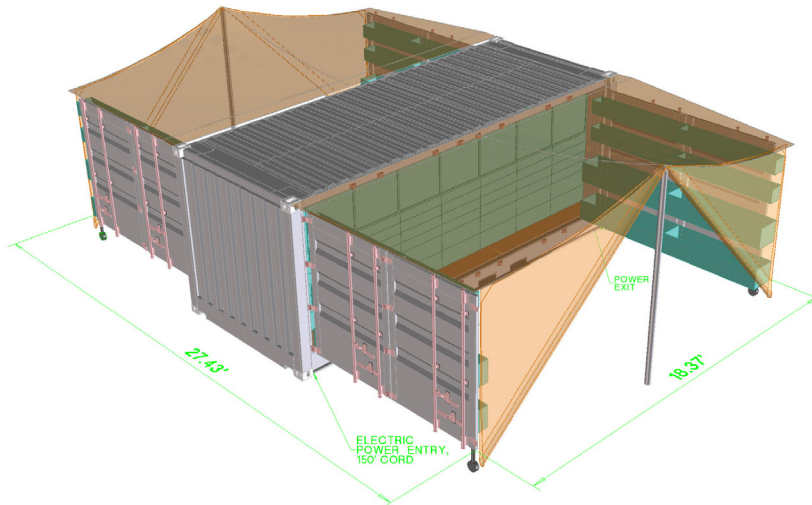




SEA BOX®

(Two) Full Side Opening (Expandable) 20' X 8' Dry Freight ISO Parts Shelter Container



PRODUCT FEATURES

STANDARD FEATURES

- (2) steel double bifold swing side doors
- Heavy duty ISPC-001 design modular storage system which include; 96 drawers, 32 cabinets, 36 bins and 16 high security compartments
- (2) all weather tarps
- Electrical system with (12) light fixtures and 150' power cord

OPTIONAL FEATURES

- Light weight ISO Container
- Light weight ISPC design modular storage system
- PLS bail bar with (2) PLS base rails

ALL NEW CONTAINERS ARE MANUFACTURED TO THE LATEST ISO STANDARD

	LENGTH		HEIGHT		WIDTH		DOOR OPENING	
	Exterior	Interior	Exterior	Interior	Exterior	Interior	Height	Width
Ft in	19' 10 1/2"	19' 5 3/4"	8' 0"	6' 11 1/4"	8' 0"	7' 3 1/2"	6' 6 1/4"	18' 4 1/2"
Metric	6,058	5,937	2,438	2,115	2,438	2,223	1,988	5,601

	TARE WEIGHT	PAYLOAD	GROSS WEIGHT	CUBIC CAPACITY
Lbs	8,050	44,860	52,910	987 Cu.Ft.
Kgs	3,650	20,350	24,000	27.9 Cu.M.

ALL DIMENSIONS AND WEIGHTS ARE NOMINAL AND SUBJECT TO MINOR VARIATIONS THAT MAY OCCUR DURING THE MANUFACTURING PROCESS

SB3892.0-ISCPC
 (Two) Full Side Opening (Expandable)
 20' X 8' Dry Freight ISO Parts Shelter Container

000000-R00

ISO 9001:2008



CERTIFIED QUALITY
MANAGEMENT SYSTEM