



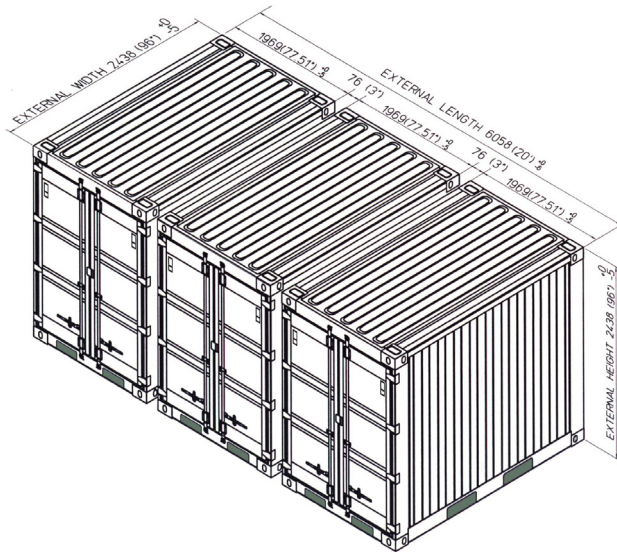
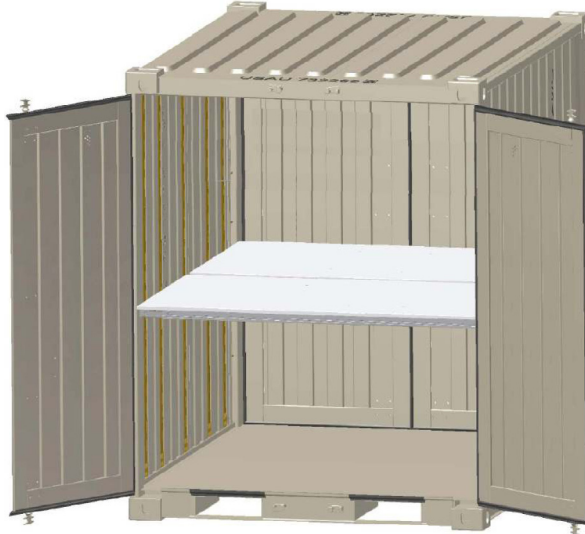
**Tricon (TYPE II) Dry Freight ISO Cargo Container with 2 Adjustable Transverse Half Shelves and 4 Shoring and Decking Beams**

**SB822.0-CC-SH2**  
 Tricon (TYPE II) Dry Freight ISO Cargo Container with 2 Adjustable Transverse Half Shelves and 4 Shoring and Decking Beams

**PRODUCT FEATURES**

**STANDARD FEATURES**

- Corrugated steel sides, roof + swing doors on both sides
- Heavy duty steel floor
- (4) way fork lift pockets
- Wall tie down steel lashing rings, 4,000 lbs. cap. each (16 total)
- Vents, (2) each
- Adjustable shelving brackets (5) sets, = (10) vertical E-track sections total
- 4 (each) Decking and Shoring Beams (SB6200) 2,200 lbs. cap. each
- 2 (each) Adjustable Transverse Shelf halves
- Tan ext. paint or Customer's Color Choice (CC)



(3) Tricon Containers coupled together to form (1) 20' ISO module

**OPTIONAL FEATURES**

- Connecting couplers, (3) per Tricon (SB2341)
- Connecting coupler storage bracket (1) each (SB2342)
- Manifest Box (2) each (SB2343)
- Transverse Shelf Halves (SB3360)
- Decking and shoring beams (SB6200)

111008-R04

**ALL NEW CONTAINERS ARE MANUFACTURED TO THE LATEST ISO STANDARD**

	LENGTH		HEIGHT		WIDTH		DOOR OPENING	
	Exterior	Interior	Exterior	Interior	Exterior	Interior	Height	Width
<b>Ft in</b>	6' 5 1/2"	6' 4"	8' 0"	7' 4 15/16"	8' 0"	7' 6 9/16"	7' 1 1/2"	6' 1 5/8"
<b>Metric</b>	1,969	1,930	2,438	2,259	2,438	2,300	2,172	1,870

	TARE WEIGHT	PAYLOAD	GROSS WEIGHT	CUBIC CAPACITY
<b>Lbs</b>	2,800	12,100	14,900	354.2 Cu. Ft.
<b>Kgs</b>	1,270	5,490	6,760	10.03 Cu. M.

ALL DIMENSIONS AND WEIGHTS ARE NOMINAL AND SUBJECT TO MINOR VARIATIONS THAT MAY OCCUR DURING THE MANUFACTURING PROCESS

ISO 9001:2008



CERTIFIED QUALITY MANAGEMENT SYSTEM