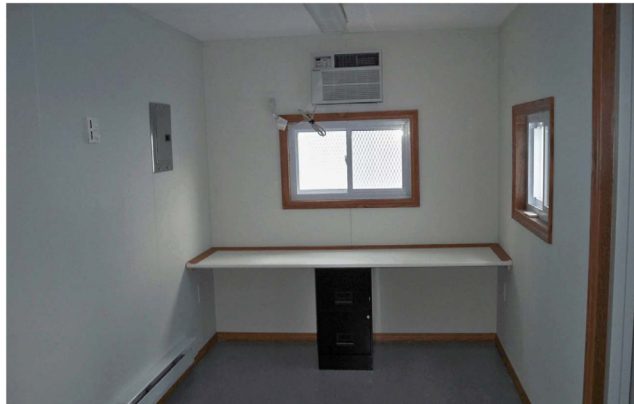




20' OFFICE CONTAINER



SB861-6-BOC
20' OFFICE CONTAINER

081809-R01

STANDARD PRODUCT FEATURES

- Low cost, Ground-level structure (no special mounting provisions required)
- White finished insulated interior
- Climate controlled heat and air conditioning
- Counter top, with (1) filing cabinet and optional plan table
- Fluorescent lighting, switches, & electrical receptacles
- Tiltbed delivery, no forklift necessary
- (1) steel personnel door entryway
- (3) sliding pane windows with high security window guards
- 220v/100 amp single phase

ISO 9001:2008



CERTIFIED QUALITY
MANAGEMENT SYSTEM

ALL NEW CONTAINERS ARE MANUFACTURED TO THE LATEST ISO STANDARD

ALL DIMENSIONS AND WEIGHTS ARE NOMINAL AND SUBJECT TO MINOR VARIATIONS THAT MAY OCCUR DURING THE MANUFACTURING PROCESS

1 Sea Box Drive, East Riverton, NJ 08077-2004 | Phone: 856 . 303 . 1101 | Fax: 856 . 303 . 1501 | Email: sales@seabox.com

www.seabox.com