

Sea Box, Inc.

CORPORATE OFFICE
 876 Land Street
 East Riverton, NJ 08077-1827
 Tel: (856) 303-1101
 Fax: (856) 303-1501
www.seabox.com
 e-mail: sales@seabox.com



CROB (CONTAINER ROLL OUT BOX)

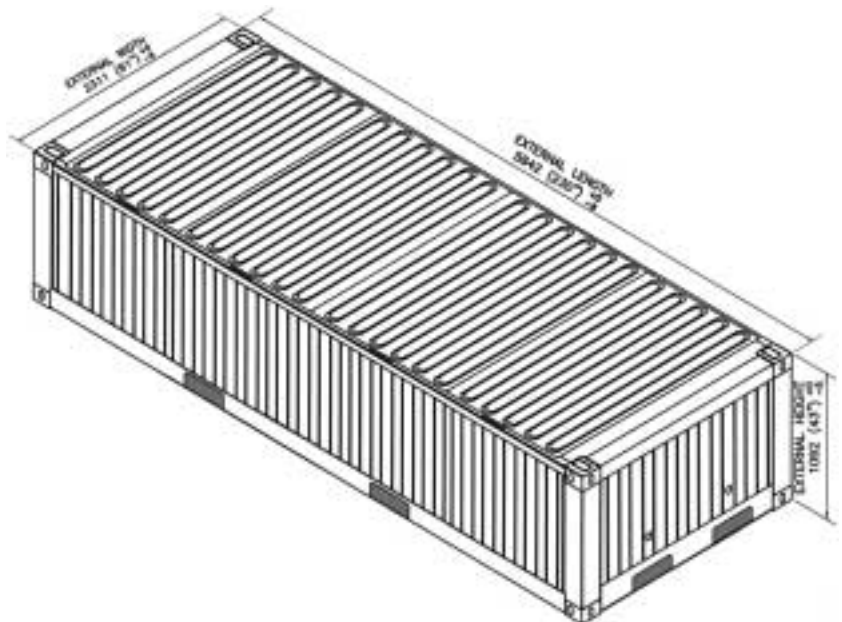
CROB	Length		Height		Width		Lid Openings	
	Exterior	Interior	Exterior	Interior	Exterior	Interior	Length	Width
FEET / INCHES	19' 2"	18' 10"	3' 7"	3' 0"	7' 7"	7' 4"	17' 9"	7' 2"
METRIC	5,842	5,740	1,092	914	2,311	2,235	5,410	2,184

CROB	Tare Weight	Payload	Gross Weight	Cubic Capacity
LBS.	4,950	17,050	22,000	382 CU.FT.
KG	2,245	7,734	9,979	10.8 CU.M.

ALL NEW CONTAINERS ARE MANUFACTURED
 TO THE LATEST ISO STANDARDS.

— STANDARD FEATURES —

- ▶ Corrugated steel sides, and roof
- ▶ Removable (4) piece locking hard top lid
- ▶ (1/8") thick steel floor
- ▶ (2) way laden fork lift pockets and (1) way unladen fork lift pockets on the front
- ▶ (2) D-rings for container removal
- ▶ (4) swivel casters with directional locks
- ▶ (1) drain port
- ▶ (2) 40" diameter drums
- ▶ (2) cable coil alignment structures
- ▶ (6) floor clamps designed to interface with customers equipment



PART # SB9319S