

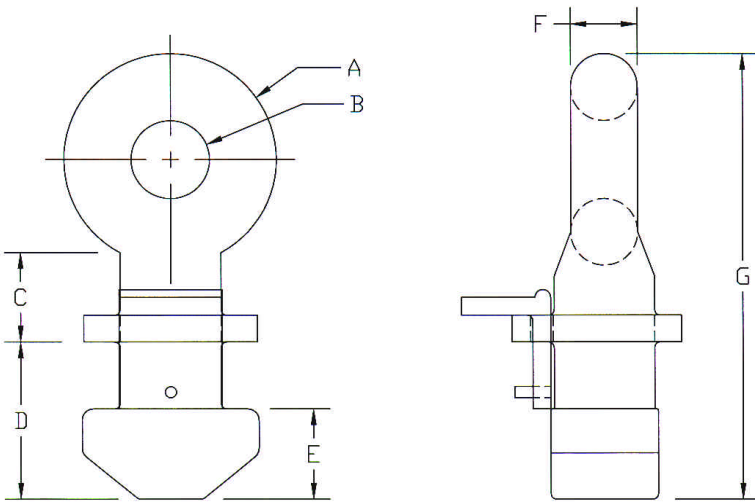
Sea Box, Inc.

CORPORATE OFFICE
 802 Industrial Hwy.
 East Riverton, NJ 08077-1910
 Tel: (856) 303-1101
 Fax: (856) 303-1501
www.seabox.com
 e-mail: sales@seabox.com



ISO Lifting Lug

This item can be used to lift containers when a forklift has limited access to the container forklift pockets.



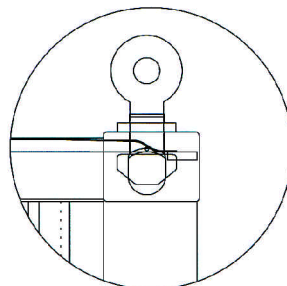
— SPECIFICATIONS —

- ▼ Material 316 stainless steel
- ▼ Finish self colored
- ▼ Capacity safe working load 40 tons
- ▼ Tare weight 16 lbs, 7.28kg

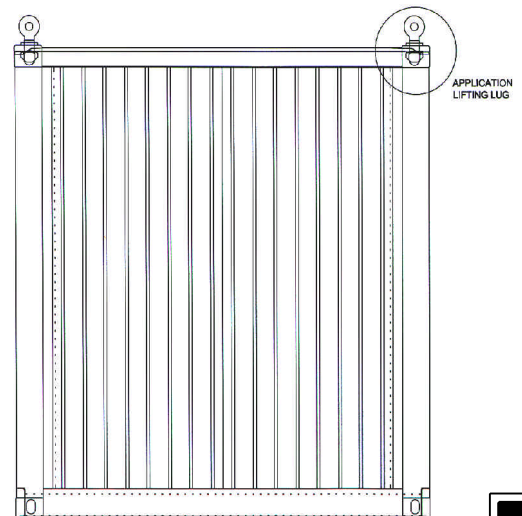
— FEATURES —

- ▼ Compatible with all ISO type containers
- ▼ High strength construction
- ▼ Designed for lifting containers when the spreader bar can not be properly aligned
- ▼ Locking ring prevents accidental turning after installation

LIFTING LUG	DIMENSIONAL INFORMATION						
	A	B	C	D	E	F	G
INCHES	4.75"D	1.75"D	2"	3.5"	2"	1.5"	10"
METRIC	121	45	51	89	51	38	254



APPLICATION
LIFTING LUG



PART # SB72009