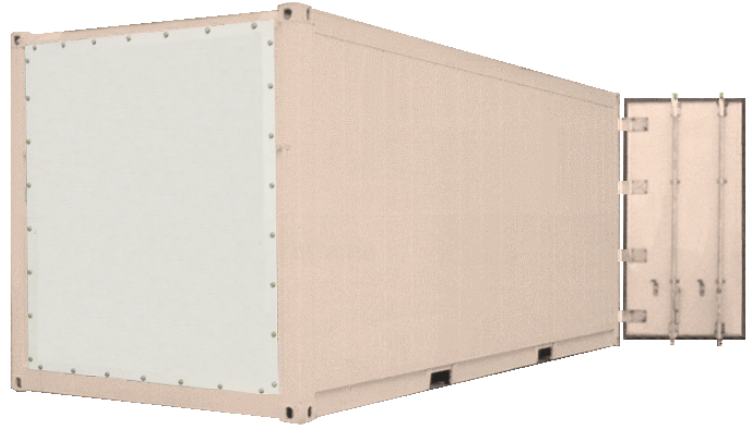


Sea Box, Inc.®

CORPORATE OFFICE
 802 Industrial Hwy.
 East Riverton, NJ 08077-1910
 Tel: (856) 303-1101
 Fax: (856) 303-1501
www.seabox.com
 e-mail: sales@seabox.com



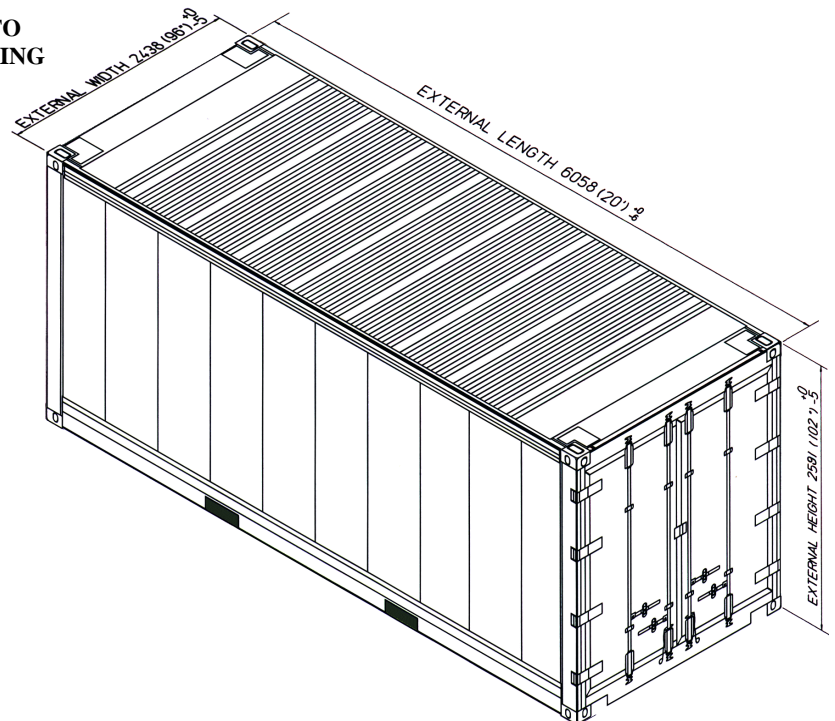
20' X 8' 6" Insulated ISO Cargo Container

20' Insulated	Length		Height		Width		Door Opening	
	Exterior	Interior	Exterior	Interior	Exterior	Interior	Height	Width
Feet/Inches	19' 10 1/2"	19' 1"	8' 6"	7' 4 1/2"	8' 0"	7' 4"	7' 4 1/2"	7' 4"
Metric	6,058	5,817	2,591	2,248	2,438	2,235	2,248	2,235

20' Insulated	Tare Weight	Payload	Gross Weight	Cubic Capacity
Lbs.	5,880	61,320	67,200	1,034 Cu. Ft.
Kg.	2,667	27,813	30,480	29.3 Cu. M.

* All dimensions are average. Exact specifications for each model are available.

ALL NEW CONTAINERS ARE MANUFACTURED TO THE LATEST ISO STANDARDS FOR 9 HIGH STACKING



— STANDARD FEATURES —

- ▼ Full opening swing cargo doors on (1) end
- ▼ Forklift pockets (on some 20' units)
- ▼ Aluminum T-grade floors
- ▼ 3" thick foam insulation including the floor
- ▼ Heavy gauge plastic or stainless steel interior lining

PART # SB521.6