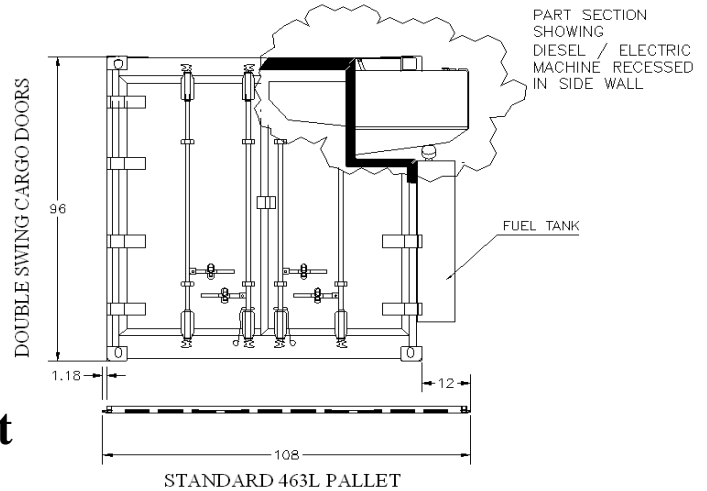


Sea Box, Inc.®

CORPORATE OFFICE
 802 Industrial Hwy.
 East Riverton, NJ 08077-1910
 Tel: (856) 303-1101
 Fax: (856) 303-1501
www.seabox.com
 e-mail: sales@seabox.com

Double Doors One Side Diesel-electric ISO Refrigeration Unit



Refer Unit	Length		Height		Width		Door Opening	
	Exterior	Interior	Exterior	Interior	Exterior	Interior	Height	Width
Feet/Inches	8' 0"	7' 9 15/32"	8' 0"	6' 11 1/4"	7' 4"	6' 7 3/16"	6' 7"	7' 9 15/32"
Metric	2,438	2,374	2,438	2,115	2,235	2,011	2,007	2,374

Refer Unit	Tare Weight	Payload	Gross Weight	Cubic Capacity
Lbs.	2,800	19,600	22,400	221.2 Cu. Ft.
Kg.	1,270	8,891	10,161	6.26 Cu. M.

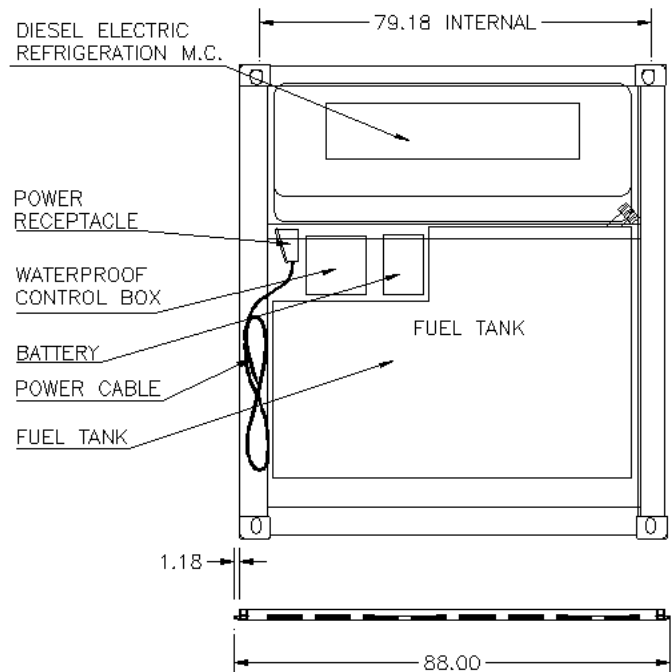
* All dimensions are average. Exact specifications for each model are available.

— STANDARD FEATURES —

- ▼ Stainless steel inner lining
- ▼ Aluminum outer lining (optional steel)
- ▼ Aluminum "T" grade floor
- ▼ Double doors one side
- ▼ Commercial machine - Marineized and made airworthy
- ▼ Self contained diesel gen set or shore power
- ▼ 208/230v-3ph-60hz or 220v-3ph-50hz
- ▼ Microprocessor control system
- ▼ R404 Refrigerant
- ▼ Automatic start-stop

— OPTIONAL FEATURES —

- ▼ Helicopter slings
- ▼ Independent data logger
- ▼ Door open / shut down switch
- ▼ Cold temp. protection and start up
- ▼ Larger fuel tanks, 50 gal. and above
- ▼ Noise reduction kit



PART # SB527.0