

# Sea Box, Inc.

## CORPORATE OFFICE

802 Industrial Hwy.  
 East Riverton, NJ 08077-1910  
 Tel: (856) 303-1101  
 Fax: (856) 303-1501  
[www.seabox.com](http://www.seabox.com)  
 e-mail: [sales@seabox.com](mailto:sales@seabox.com)



## (Two) Full Side Opening (Expandable) 20' X 8' Dry Freight ISO Parts Shelter Container

(TWO) FULL SIDE OPENING	Length		Height		Width		Both Door Openings	
	Exterior	Interior	Exterior	Interior	Exterior	Interior	Height	Width
FEET / INCHES	19' 10 1/2"	19' 5 3/4"	8' 0"	6' 11 1/4"	8' 0"	7' 3 1/2"	6' 6 1/4"	18' 4 1/2"
METRIC	6058	5937	2438	2115	2438	2223	1988	5601

(TWO) FULL SIDE OPENING	Container Tare Weight	Container Payload	Container Gross Weight	Container Cubic Capacity
LBS.	8,050	44,860	52,910	987 CU.FT.
KG	3650	20350	24000	27.9 CU.M.

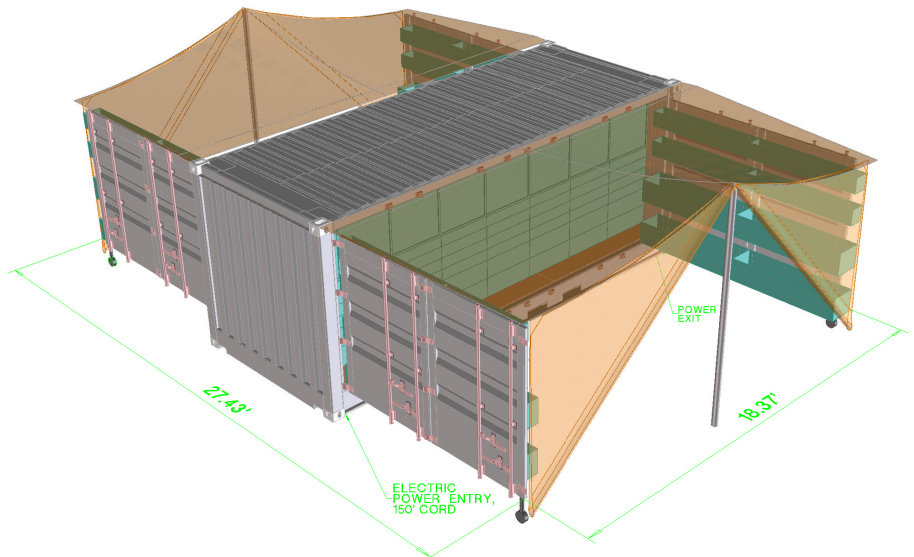
ALL NEW CONTAINERS ARE MANUFACTURED  
 TO THE LATEST ISO STANDARDS.  
 FOR 9 HIGH STACKING

### — STANDARD FEATURES —

- ▼ (2) steel double bifold swing side doors
- ▼ Heavy duty ISPC-001 design modular storage system which include; 96 drawers, 32 cabinets, 36 bins and 16 high security compartments
- ▼ (2) all weather tarps
- ▼ Electrical system with (12) light fixtures and 150' power cord

### — OPTIONAL FEATURES —

- ▼ Light weight ISO Container
- ▼ Light weight ISPC design modular storage system
- ▼ PLS bail bar with (2) PLS base rails



**PART # SB3892.0 ISCP**