

Sea Box, Inc.®

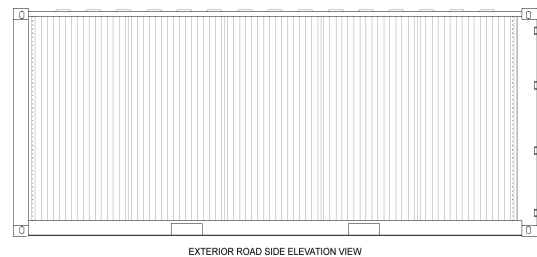
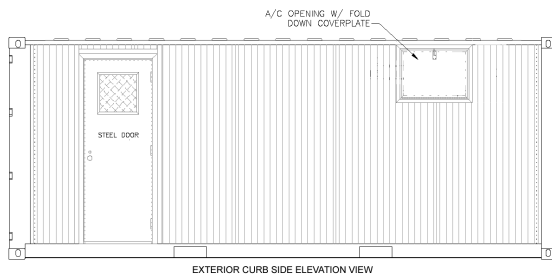
CORPORATE OFFICE
 802 Industrial Hwy.
 East Riverton, NJ 08077-1910
 Tel: (856) 303-1101
 Fax: (856) 303-1501
www.seabox.com
 e-mail: sales@seabox.com

STANLEY

Vidmar®



20' (TYPE 1) ISO Container with Office Package



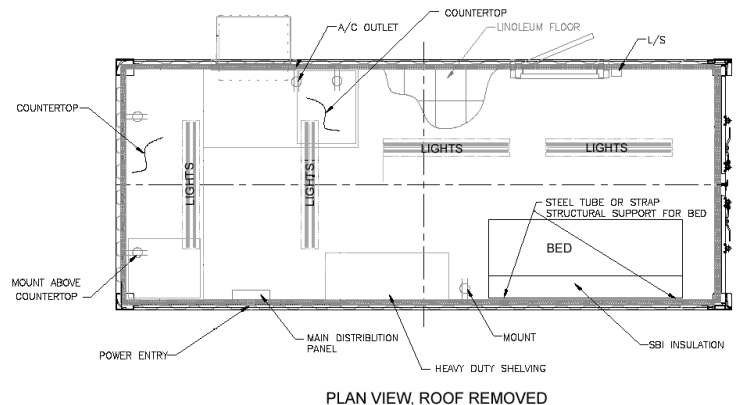
— STANDARD FEATURES —

CONTAINER

- ? Corrugated steel sides, roof + swing doors on both sides
- ? (2) sets of forklift pockets, laden and unladen
- ? 30" X 80" personnel door with 16" X 16" window
- ? (1) Reinforced cutout frame for a window mount A/C unit (coverplate installed for overseas shipping)
- ? Commercial grade linoleum tile floor
- ? SBI standard insulation (1 1/2" foam and 3/8" OSB board with white textured plastic lining)
- ? (1) Frigidaire model FAS15SP1A (part # 4CE69) window type A/C, 110 volt single phase, 15,000 BTU cooling
- ? Electrical and Lighting Package (power entry, main distribution panel, circuit, switch, light fixtures)
- ? STANLEY VIDMAR cabinets and shelves
- ? Ext. Paint Color Choice of OD Green or Desert Tan

— OPTIONS —

- ? CARC paint



ALL NEW CONTAINERS ARE MANUFACTURED TO THE LATEST ISO STANDARDS FOR 9 HIGH STACKING

PART # SB861.0 OP