

Sea Box, Inc.®

CORPORATE OFFICE
 802 Industrial Hwy.
 East Riverton, NJ 08077-1910
 Tel: (856) 303-1101
 Fax: (856) 303-1501
www.seabox.com
 e-mail: sales@seabox.com

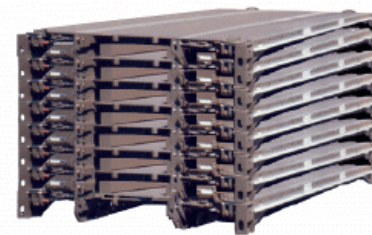


Container Air Mobile Platform (CAMP)

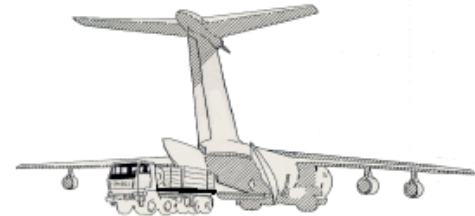
Dimensions	Ext. Length	Ext. Height	Ext. Width	Useable Deck Length	Int. Useable Cargo Height*	Useable Deck Width
Feet/Inches	19' 3"	10"	7' 7 1/2"	18' 2"	6' 5"	7' 5"
Metric	5,867	254	2,324	5,537	1,956	2,261

* w/ min 2" Header Clearance

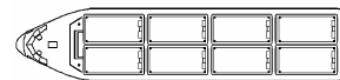
CAMP	Tare Weight	Payload	Gross Weight
Lbs.	2,000	30,250	32,250
Kg.	9,072	13,721	14,683



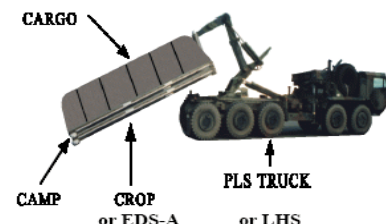
Eight (8) high stack of CAMP's can fit into a 20' ISO cargo container.



CAMP is loaded on a self-unloading straight truck or K-Loader that pushes the container directly into the aircraft.



(8) Platforms in a C-17 Cargo Bay



CAMP on a PLS CROP or EDS-A (LN700) on a LHS truck.

— CAMP PRIMARY DESIGN FEATURES —

- The CAMP is capable of being loaded and handled at cargo consolidation points and warehouses with common commercial style Materials Handling Equipment (MHE) as well as being handled with the airport ground handling roller systems. One set of fork pockets is provided on the side and a second set is provided on the front of the CAMP.
- The CAMP has side rail tie down apertures designed for positive securement of a variety of freight of all kinds. This Sea Box design offers a total of 19 sets of tie down points.
- It is Possible to stack and secure eight (8) empty CAMPs within an ISO container or trailer for retrograde shipment. The CAMP can be stacked upon each by MHE.
- Operationally, the CAMP interfaces with the current 88" or 108" wide floor locking system, K-Loaders, 20' ISO containers, 20' Straight Delivery trucks, 23' ISO Chassis Trailers, any commercial or military flatbed trailer and PLS CROP platform or EDS-A LN700 Platform and the C-17, C-130, C-5 and C-141 military cargo aircraft.

PART # SB9419A CAMP