

# Sea Box, Inc.®

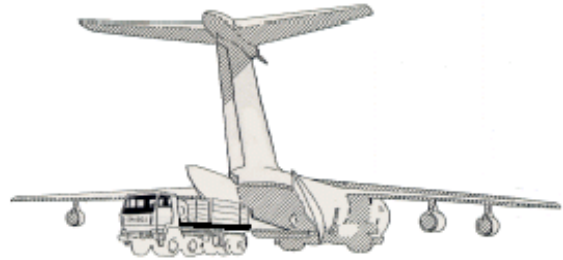
**CORPORATE OFFICE**  
 802 Industrial Hwy.  
 East Riverton, NJ 08077-1910  
 Tel: (856) 303-1101  
 Fax: (856) 303-1501  
[www.seabox.com](http://www.seabox.com)  
 e-mail: [sales@seabox.com](mailto:sales@seabox.com)



## Enhanced Container Delivery System (ECDS)

Dimensions	Ext. Length	Ext. Height	Ext. Width	Deck Length	Deck Width
Feet/Inches	9"	5 3/4"	7' 4"	8' 9"	7' 1"
Metric	2,743	146	2,235	2,667	2,159

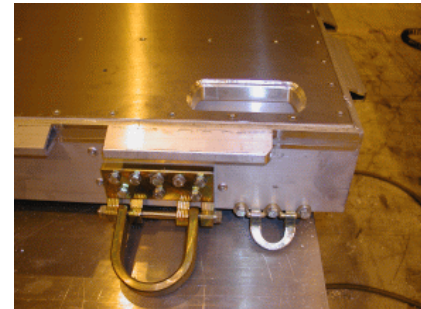
ECDS	Tare Weight	Payload	Gross Weight
Lbs.	600	9,400	10,000
Kg.	272	4,264	4,636



The ECDS can be air dropped by either a C-130 or C-17 military cargo aircraft.

### — ECDS PRIMARY DESIGN FEATURES —

- a. Four-way forklift pockets provided are compatible with Army Rough Terrain & USAF All Terrain 10K forklifts.
- b. Four (4) Heavy Duty D-Rings are proved for sling load by rotary wing aircrafts (KPP) or for platform suspended airdrops at maximum rigged weight.
- c. Twenty two (22) cargo tie down provisions compatible with existing 436L cargo nets located on side rails.
- d. Eight (8) additional inboard tie downs are located flush in the deck of the platform.
- e. The Sea Box design is compatible with the Army's LHS and Palletized Loading System (PLS) and LHS.



Heavy Duty D-rings



ECDS Pallet is sling loadable and designed for suspended air drops.

**PART # SB ECDS**