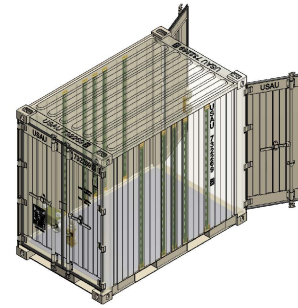


Sea Box, Inc.®

CORPORATE OFFICE
 802 Industrial Hwy.
 East Riverton, NJ 08077-1910
 Tel: (856) 303-1101
 Fax: (856) 303-1501
www.seabox.com
 e-mail: sales@seabox.com



Quadcon Dry Freight ISO Cargo Container with 1 Cabinet and 5 Drawers

Quadcon	Length		Height		Width		Door Opening	
	Exterior	Interior	Exterior	Interior	Exterior	Interior	Height	Width
Feet/Inches	4' 9 3/8"	4' 7 7/8"	6' 10"	6' 2 3/8"	8' 0"	7' 6 9/16"	5' 11 3/16"	4' 5 5/8"
Metric	1,457	1,419	2,082	1,889	2,438	2,300	1,808	1,362

Quadcon	Tare Weight	Payload	Gross Weight	Cubic Capacity
Lbs.	3,019	8,181	11,200	217.8 Cu. Ft.
Kg.	1,369	3,711	5,080	6.17 Cu. M.

— STANDARD FEATURES —

- ▶ Corrugated steel sides, roof + swing doors on both sides
- ▶ (4) way fork lift pockets
- ▶ (1) heavy duty steel Stanley Vidmar Cabinets with 5 Drawers each with Divider Partitions
- ▶ Wall tie down steel lashing rings, 2,000 lbs. capacity (20 total)
- ▶ Adjustable shelving A-track (4) sets:
 (10) vertical A-track sections (5 per side)
- ▶ (5) Top Lashing Rings
- ▶ (5) Bottom Lashing Rings
- ▶ OD Green #34088 exterior, Sea Foam Green #24533 interior paint
- ▶ 3 Connecting Coupler w/ Bracket
- ▶ Document Holder

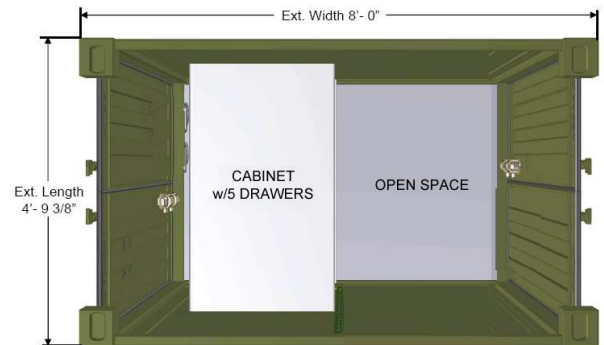
— OPTIONAL FEATURES —

- ▶ Transverse Shelf Halves with 1 set of 4 shelf brackets
- ▶ Shoring and Decking beams
- ▶ Web Straps with ratchets

QUADCON CONTAINERS ARE MANUFACTURED TO ISO STANDARDS FOR 9 HIGH STACKING

DRY FREIGHT CONTAINER, ALL CORTEN STEEL MONOCOQUE CONSTRUCTION

CONFORMING TO ISO 668 + 1496 CSC CERTIFIED



PLAN VIEW



PART # SB812.CT1-5D.DLA

(4) Quadcon Containers coupled together to form (1) 20' ISO Module