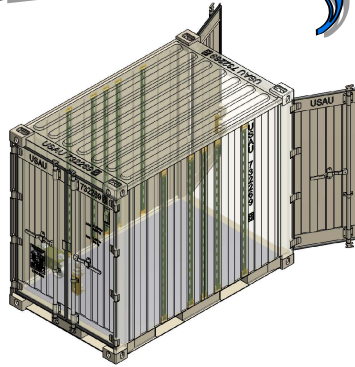


# Sea Box, Inc.®

**CORPORATE OFFICE**  
 802 Industrial Hwy.  
 East Riverton, NJ 08077-1910  
 Tel: (856) 303-1101  
 Fax: (856) 303-1501  
[www.seabox.com](http://www.seabox.com)  
 e-mail: [sales@seabox.com](mailto:sales@seabox.com)



## COMMON 10 Quadcon Dry Freight ISO Cargo Container

Quadcon	Length		Height		Width		Door Opening	
	Exterior	Interior	Exterior	Interior	Exterior	Interior	Height	Width
Feet/Inches	4' 9 3/8"	4' 7 7/8"	6' 10"	6' 2 3/8"	8' 0"	7' 6 9/16"	5' 11 3/16"	4' 5 5/8"
Metric	1,457	1,419	2,082	1,889	2,438	2,300	1,808	1,362
Quadcon	Tare Weight		Payload		Gross Weight		Cubic Capacity	
Lbs.	2,468		8,714		11,200		217.8 Cu. Ft.	
Kg.	1,128		3,952		5,080		6.17 Cu. M.	

### — STANDARD FEATURES —

- ▶ Corrugated steel sides, roof + swing doors on both sides
- ▶ (4) way fork lift pockets
- ▶ Wall tie down steel lashing rings, 2,000 lbs. capacity (20 total)
- ▶ Adjustable shelving A-track (4) sets:  
 (10) vertical A-track sections (5 per side)
- ▶ (2) each Caster Wheel storage brackets, holds (2) casters each
- ▶ (2) each Container Coupler Storage Bracket, hold (2) couplers each
- ▶ (2) Vents (one per door panel)
- ▶ OD Green #34088 exterior, Sea Foam Green #24533 interior paint

### — OPTIONAL FEATURES —

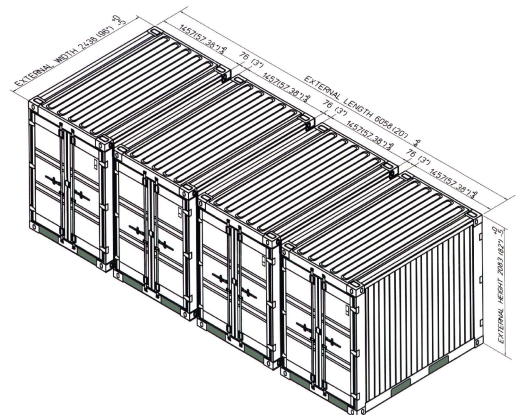
- ▶ (4) Full size shelving system provides  
 (8) each transverse shelf halves, with non-slip polyurea surface coating with 32 shelf brackets (of which 8 are floor welded)  
 (8) each recessed tie down bars per shelf half  
 Each full size shelving system is rated at 550 lbs. capacity
- ▶ (4) each Shoring and Deck beams
- ▶ (64) each Web Straps with ratchets 48" L x 1" W, 700 lbs. SWL
- ▶ (4) each Caster Wheels, (2) swivel & (2) fixed  
 9" diameter wheel, 1/2" thick Polyurethane band  
 3,000 lbs. working load each, 12,000 lbs. capacity total  
 All equipped with brakes and twist locks
- ▶ (4) each Container Coupler (Horizontal Twistlocks)
- ▶ Additional Transverse Shelf Halves with 1 set of 4 shelf brackets
- ▶ Additional Shoring and Decking beams
- ▶ Additional Web Straps with ratchets
- ▶ Tow Bar



QUADCON CONTAINERS ARE MANUFACTURED TO ISO STANDARDS FOR 9 HIGH STACKING

DRY FREIGHT CONTAINER, ALL CORTEN STEEL MONOCOQUE CONSTRUCTION

CONFORMING TO ISO 668 + 1496 CSC CERTIFIED



(4) Quadcon Containers coupled together to form (1) 20' ISO module!

**PART # SB812.SG.COM10**