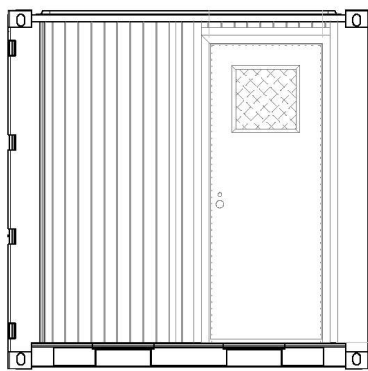


Sea Box, Inc.®

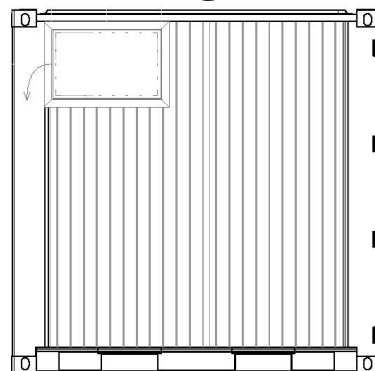
CORPORATE OFFICE
 802 Industrial Hwy.
 East Riverton, NJ 08077-1910
 Tel: (856) 303-1101
 Fax: (856) 303-1501
www.seabox.com
 e-mail: sales@seabox.com



Tricon (TYPE 1) Climate Controlled Storage Container with Additional Access Door & Light



SECTION A
 EXTERIOR CURB SIDE ELEVATION VIEW



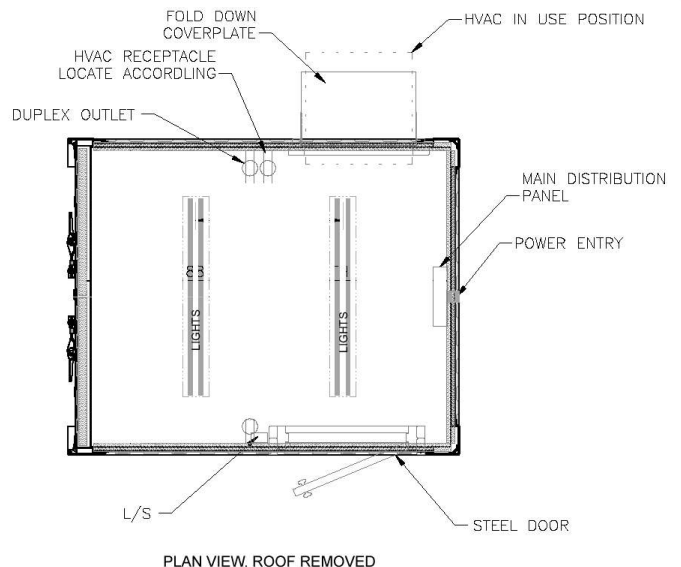
SECTION B
 EXTERIOR ROAD SIDE ELEVATION VIEW

— STANDARD FEATURES —

- ▶ Corrugated steel sides, roof + swing doors on both sides
- ▶ Heavy duty steel floor
- ▶ (4) way fork lift pockets
- ▶ Connecting couplers, (3) per Tricon
- ▶ Connecting coupler storage bracket (1) each
- ▶ (1) 30" x 80" high steel personnel door with (1) 16" x 16" window
- ▶ (1) reinforced cutout frame for a window mount unit, (1) cover plate installed for overseas shipping
- ▶ 1 1/2" foam insulation and 3/8" OSB board with white textured lining
- ▶ (1) Grainger ES12 (part # 3DU31), 208 A/C volt, single phase, 11988 BTU cooling, 8900 BTU heat
- ▶ Electrical & Lighting package: light fixtures, circuit, switch, distribution panel, and receptacles
- ▶ Ext. Paint Color Choice of OD Green or Standard Tan

— OPTIONS —

- ▶ STANLEY VIDMAR cabinets, shelves, and desks



ALL NEW CONTAINERS ARE MANUFACTURED TO THE LATEST ISO STANDARDS FOR 9 HIGH STACKING

PART # SB821.0.OP

