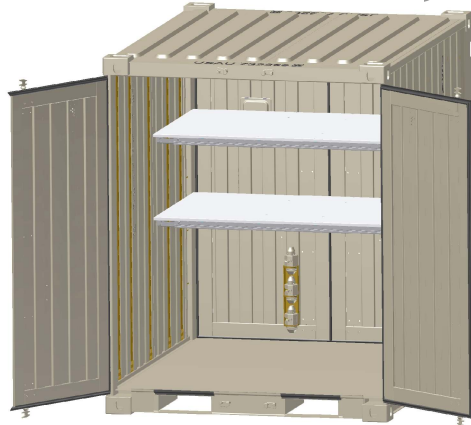


Sea Box, Inc.®

CORPORATE OFFICE
 802 Industrial Hwy.
 East Riverton, NJ 08077-1910
 Tel: (856) 303-1101
 Fax: (856) 303-1501
www.seabox.com
 e-mail: sales@seabox.com



Tricon (Type II) Dry Freight ISO Cargo Container with 2 Adjustable Transverse Metal Shelves and 4 Shoring and Decking Beams

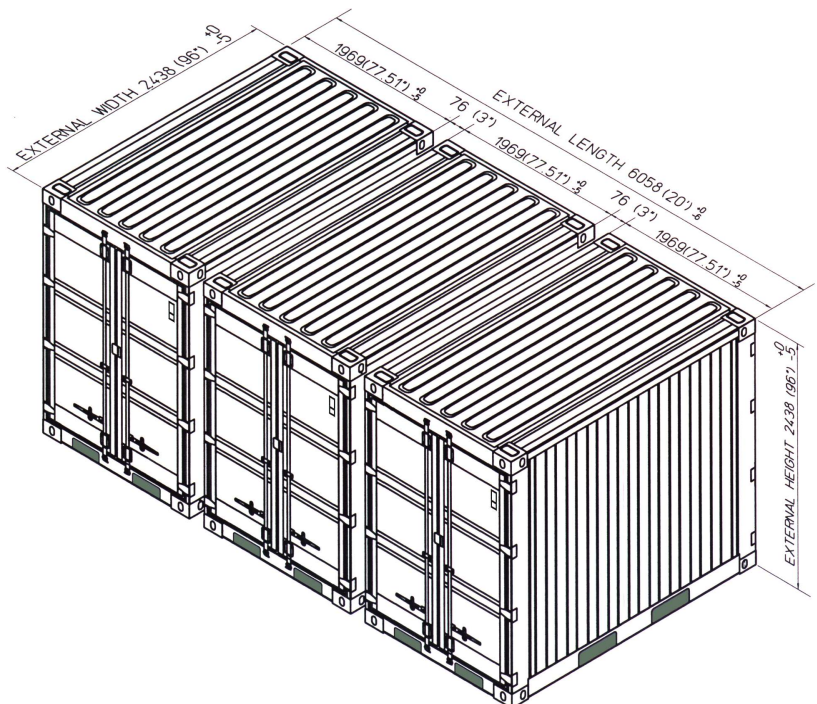
Tricon	Length		Height		Width		Door Opening	
	Exterior	Interior	Exterior	Interior	Exterior	Interior	Height	Width
Feet/Inches	6' 5 1/2"	6' 4"	8' 0"	7' 4 15/16"	8' 0"	7' 6 9/16"	7' 1 1/2"	6' 1 5/8"
Metric	1,969	1,930	2,438	2,259	2,438	2,300	2,172	1,870

Tricon	Tare Weight	Payload	Gross Weight	Cubic Capacity
Lbs.	2,800	12,100	14,900	354.2 Cu. Ft.
Kg.	1,270	5,490	6,760	10.03 Cu. M.

ALL NEW CONTAINERS ARE MANUFACTURED TO THE LATEST ISO STANDARDS FOR 9 HIGH STACKING

— STANDARD FEATURES —

- ▶ Corrugated steel sides, roof + swing doors on both sides
- ▶ Heavy duty steel floor
- ▶ (4) way fork lift pockets
- ▶ Wall tie down steel lashing rings, 4,000 lbs. cap. each (16 total)
- ▶ Door corner post tie downs (20 total) = restraint system, shoring slot will support 2" x 6" lumber
- ▶ Vents, (2) each
- ▶ Manifest box (2) each
- ▶ Connecting couplers, (3) per Tricon
- ▶ Connecting coupler storage bracket (1) each
- ▶ Adjustable shelving brackets (5) sets, = (10) vertical E-track sections total
- ▶ 4 (each) load Bars - 2,000 lbs. cap. each
- ▶ 2 (each) Adjustable Transverse Metal Shelf halves
- ▶ Decking and shoring beams (15) each
- ▶ Tan exterior paint



(3) Tricon Containers coupled together to form (1) 20' ISO module!

PART # SB822.0.ST.SH2