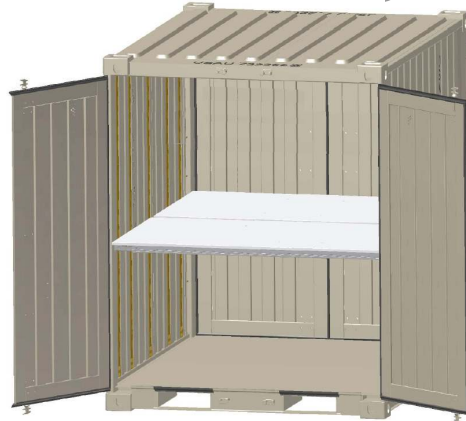


Sea Box, Inc.®

CORPORATE OFFICE
 802 Industrial Hwy.
 East Riverton, NJ 08077-1910
 Tel: (856) 303-1101
 Fax: (856) 303-1501
www.seabox.com
 e-mail: sales@seabox.com



Tricon (Type II) Dry Freight ISO Cargo Container with 2 Adjustable Transverse Half Shelves and 4 Shoring and Decking Beams

Tricon	Length		Height		Width		Door Opening	
	Exterior	Interior	Exterior	Interior	Exterior	Interior	Height	Width
Feet/Inches	6' 5 1/2"	6' 4"	8' 0"	7' 4 15/16"	8' 0"	7' 6 9/16"	7' 1 1/2"	6' 1 5/8"
Metric	1,969	1,930	2,438	2,259	2,438	2,300	2,172	1,870

Tricon	Tare Weight	Payload	Gross Weight	Cubic Capacity
Lbs.	2,800	12,100	14,900	354.2 Cu. Ft.
Kg.	1,270	5,490	6,760	10.03 Cu. M.

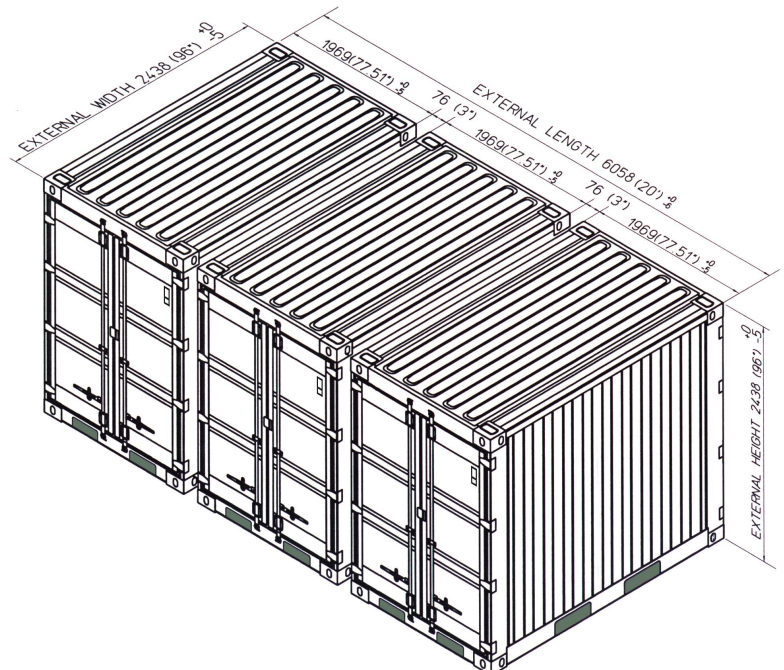
ALL NEW CONTAINERS ARE MANUFACTURED TO
 THE LATEST ISO STANDARDS FOR 9 HIGH STACKING

— STANDARD FEATURES —

- ▶ Corrugated steel sides, roof + swing doors on both sides
- ▶ Heavy duty steel floor
- ▶ (4) way fork lift pockets
- ▶ Wall tie down steel lashing rings, 4,000 lbs. cap. each (16 total)
- ▶ Vents, (2) each
- ▶ Adjustable shelving brackets (5) sets, = (10) vertical E-track sections total
- ▶ 4 (each) Decking and Shoring Beams (SB6200) 2,200 lbs. cap. each
- ▶ 2 (each) Adjustable Transverse Shelf halves
- ▶ Tan ext. paint or Customer's Color Choice (CC)

— OPTIONAL FEATURES —

- ▶ Connecting couplers, (3) per Tricon (SB2341)
- ▶ Connecting coupler storage bracket (1) each (SB2342)
- ▶ Manifest Box (2) each (SB2343)
- ▶ Transverse Shelf Halves (SB3360)
- ▶ Decking and shoring beams (SB6200)



(3) Tricon Containers coupled together
 to form (1) 20' ISO module!

PART # SB822.0.CC.SH2