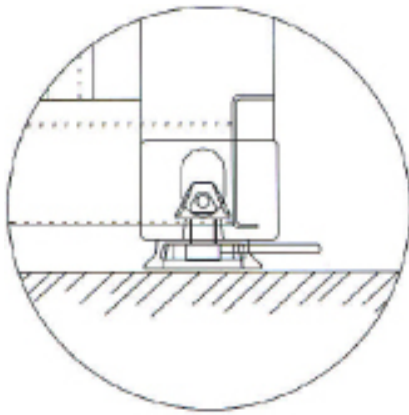
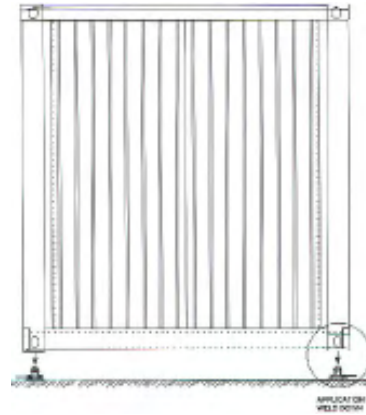




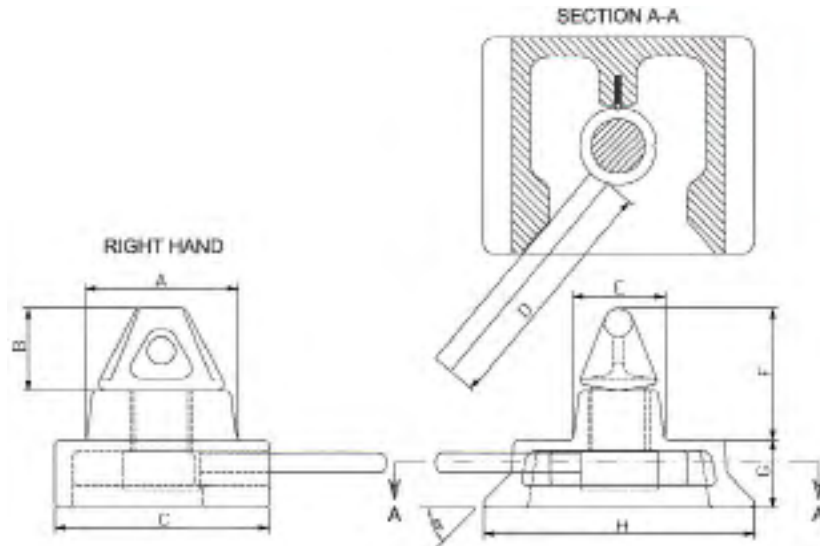
SEA BOX®

Deck Mount Twistlock

SB1470.DLA
Deck Mount Twistlock



APPLICATION
WELD DOWN



*This item can be used to secure
containers when welded to steel ship deck*

PRODUCT FEATURES

SPECIFICATIONS

- Cone-forged steel
- Body-ductile iron
- Finish hot dip galvanized
- Capacity safe working load 75 tons
- Rated capacity tension 34 tons
- Rated Capacity shear 45 tons
- Rated capacity compression 150 tons
- Tare weight 13.9 lbs, 6.3kg

STANDARD FEATURES

- Compatible with all ISO type containers

ORDER INFORMATION

- SB1470R = Right Hand (picture shown)
- SB1470L = Left Hand

NSN #: 8145-01-623-2176

091913-R01

ISO 9001:2008



**CERTIFIED QUALITY
MANAGEMENT SYSTEM**

Twistlock	DIMENSIONAL INFORMATION							
	A	B	C	D	E	F	G	H
Ft in	3.94"	2.32"	5.51"	6.3"	2.36"	3.58"	1.65"	6.89"
Metric	100	59	140	160	60	91	42	175

ALL DIMENSIONS AND WEIGHTS ARE NOMINAL AND SUBJECT TO MINOR VARIATIONS THAT MAY OCCUR DURING THE MANUFACTURING PROCESS