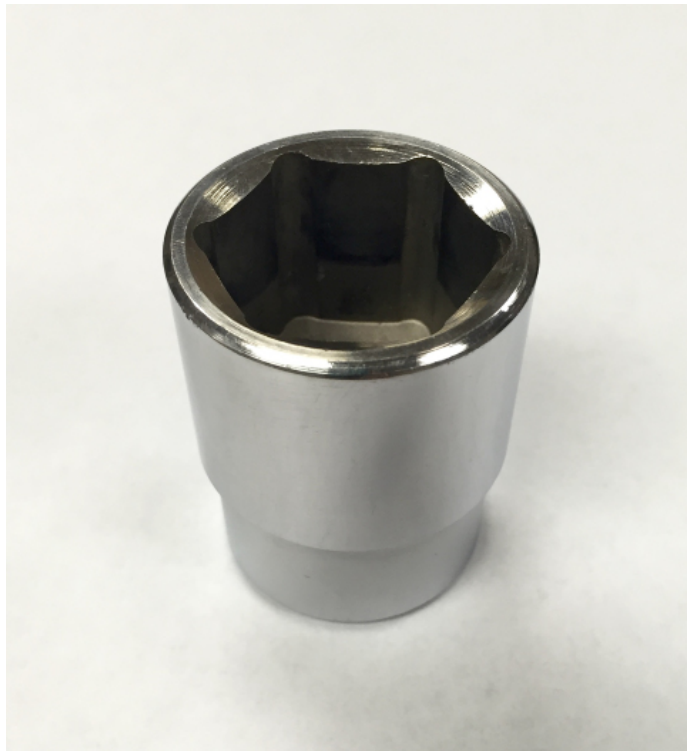




## 1.125" Socket Wrench for Container Tie Down to Concrete Hardware Package



### STANDARD FEATURES

- 1.125" socket wrench with 1/2" drive designed for use with SB3417 Container Tie Down to Concrete Hardware Package
- HD Steel, plated, 15" (381 mm) long handle for more leverage

**SB240914**  
**1.125" Socket Wrench for  
Container Tie Down to Concrete Hardware Package**

063016-R01

ISO 9001



CERTIFIED QUALITY  
MANAGEMENT SYSTEM

ALL DIMENSIONS AND WEIGHTS ARE NOMINAL AND SUBJECT TO MINOR VARIATIONS THAT MAY OCCUR DURING THE MANUFACTURING PROCESS

1 Sea Box Drive, East Riverton, NJ 08077-2004 | Phone: 856 . 303 . 1101 | Fax: 856 . 303 . 1501 | Email: parts@seabox.com

[www.seabox.com](http://www.seabox.com)