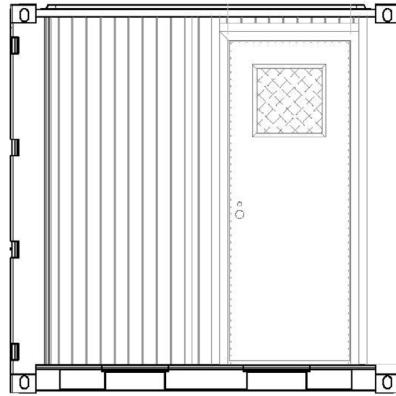
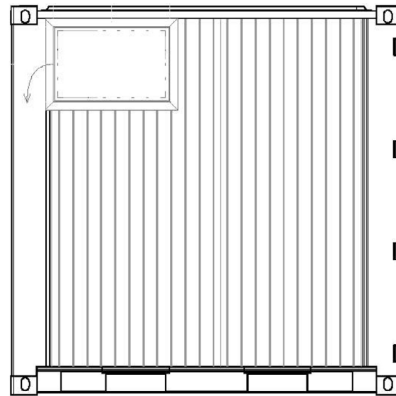




## Tricon Insulated Shelter with Climate Control & Basic Electrical Package



SECTION A  
EXTERIOR CURB SIDE ELEVATION VIEW



SECTION B  
EXTERIOR ROAD SIDE ELEVATION VIEW

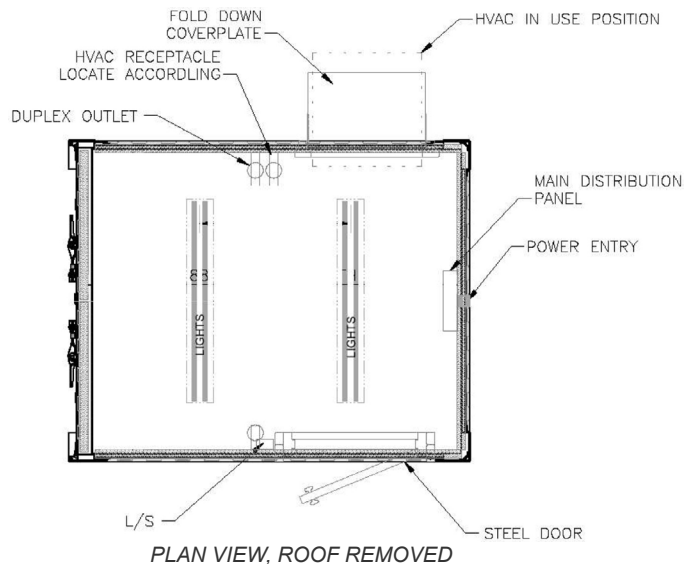
### PRODUCT FEATURES

#### STANDARD FEATURES

- Corrugated steel sides, roof + swing doors on both sides
- Heavy duty steel floor
- (4) way fork lift pockets
- (1) 30" x 80" high steel personnel door with (1) 16" x 16" window
- (1) reinforced cutout frame for a window mount unit, (1) cover plate installed for overseas shipping
- 1 1/2" foam insulation and 3/8" plywood board with white textured lining
- (1) Grainger ES12 (part # 4PLD2), 208 A/C volt, single phase, 11988 BTU cooling, 8900 BTU heat
- Electrical & Lighting package: light fixtures, circuit, switch, distribution panel, and receptacles
- Ext. Paint Color Choice of OD Green or Standard Tan

#### OPTIONAL FEATURES

- STANLEY VIDMAR cabinets, shelves, and desks



PLAN VIEW, ROOF REMOVED

**SB3821-0.4-CPN**  
Tricon Insulated Shelter with Climate Control & Basic Electrical Package

121912-R00

ISO 9001



CERTIFIED QUALITY  
MANAGEMENT SYSTEM

**ALL NEW CONTAINERS ARE MANUFACTURED TO THE LATEST ISO STANDARD**

ALL DIMENSIONS AND WEIGHTS ARE NOMINAL AND SUBJECT TO MINOR VARIATIONS THAT MAY OCCUR DURING THE MANUFACTURING PROCESS