



# SEA BOX®

## 10' X 8' Bicon (TYPE 2) ISO Container Double Doors Both Ends

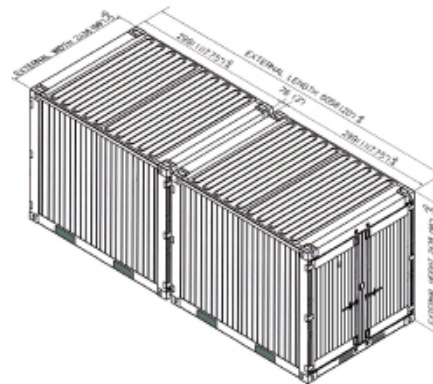
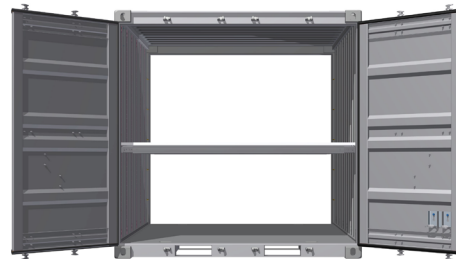
### STANDARD PRODUCT FEATURES

- LOWEST TARE WEIGHT and LARGEST CUBIC CAPACITY for any Bicon TYPE 2
- Full-width cargo access doors on both ends of the container (swing out a full 270 degrees for ease of loading)
- (4) way fork lift pockets, 4.0" H x 14.5" W
- (12) each floor level steel articulated tie down lashing rings and (12) each top side rail
- 20 each, door corner post shoring slot tie downs
- (4) each Door sill, recessed floor tie down steel lashing rings, 2 per door end, 18" in, all lashing rings are 4,000 lbs. cap.
- (12) total vertical logistics tracks ("E" series), 12 gauge steel
- (1) Full size shelving system provides only
  - (4) each longitudinal quarter shelf
  - Non-Absorbing Composite shelves, 104 7/16" x 93" full size
  - Each shelving system is rated at 2,000 lbs. cap.
  - (6) each Shoring and Shelf Decking beams
- Connecting couplers, (2) per Bicon
- Connecting coupler storage bracket (1) each
- Vents, Passive type, (2) each
- Premium paint, organic Zinc rich, min. 85% Zinc by weight in dry film
- Top coat lusterless Federal Standard Grey Color (36463)
- Dry freight container, all corten steel monocoque construction
- Conforming to ISO 668 + 1496-1 CSC Certified

### OPTIONAL PRODUCT FEATURES

- Top coat paint color Green 34094, Tan 33446 or White 37875
- CARC Top coat paint
- (1) Full size shelving system provides only
  - (4) each longitudinal quarter shelf
  - Non-Absorbing Composite shelves, 104 7/16" x 93" full size
  - Each shelving system is rated at 2,000 lbs. cap.
  - (6) each Shoring and Shelf Decking beams
- Articulated Track Fittings with "D" Ring (SB3410)
- Web Strap and Ratchet (SB3400)
- Rack & Cabinet systems
- Closesable vents

NSN # 8150-01-586-4979



(2) Bicon Containers can be coupled together to form (1) 20' ISO module

### OPTIONAL PRODUCT FEATURES (Cont'd)

- Locking bar, security seal or cable
- Captive padlock with 2 keys
- Tectyle undercoating

### ALL NEW CONTAINERS ARE MANUFACTURED TO THE LATEST ISO STANDARD

	LENGTH		HEIGHT		WIDTH		DOOR OPENING	
	Exterior	Interior	Exterior	Interior	Exterior	Interior	Height	Width
<b>Ft in</b>	9' 9 3/4"	9' 3 7/32"	8' 0"	7' 5 1/64"	8' 0"	7' 9 57/64"	7' 1 3/64"	7' 8 1/8"
<b>Metric</b>	2,991	2,825	2,438	2,261	2,438	2,385	2,160	2,340

	TARE WEIGHT	PAYLOAD	GROSS WEIGHT	CUBIC CAPACITY
<b>Lbs</b>	3,370	23,090	26,460	538 Cu. Ft.
<b>Kgs</b>	1,529	10,471	12,000	15.23 Cu. M.

ALL DIMENSIONS AND WEIGHTS ARE NOMINAL AND SUBJECT TO MINOR VARIATIONS THAT MAY OCCUR DURING THE MANUFACTURING PROCESS

**SB842.0.SGR.3LST.FTDR**  
10' X 8' Bicon (TYPE 2) ISO Container  
Double Doors Both Ends

091114-R00

ISO 9001



CERTIFIED QUALITY  
MANAGEMENT SYSTEM