

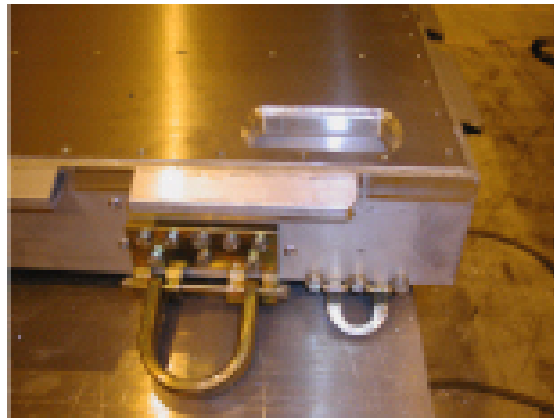


SEA BOX[®]

Enhanced Container Delivery System (ECDS)



The ECDS can be air dropped by either a C-130 or C-17 military cargo aircraft.



Heavy Duty D-rings



ECDS Pallet is sling loadable and designed for suspended air drops.

ECDS PRIMARY DESIGN FEATURES

- Four-way forklift pockets provided are compatible with Army Rough Terrain & USAF All Terrain 10K forklifts.
- Four (4) Heavy Duty D-Rings are provided for sling load by rotary wing aircrafts (KPP) or for platform suspended airdrops at maximum rigged weight.
- Twenty two (22) cargo tie down provisions compatible with existing 436L cargo nets located on side rails.
- Eight (8) additional inboard tie downs are located flush in the deck of the platform.
- The Sea Box design is compatible with the Army's LHS and Palletized Loading System (PLS) and LHS.

ALL NEW CONTAINERS ARE MANUFACTURED TO THE LATEST ISO STANDARD

	Exterior Length	Exterior Height	Exterior Width	Deck Length	Deck Width
Ft in	9"	5 3/4"	7' 4"	8' 9"	7' 1"
Metric	2,743	146	2,235	2,667	2,159
	TARE WEIGHT		PAYLOAD	GROSS WEIGHT	
Lbs	600		9,400	10,000	
Kgs	272		4,264	4,636	

ALL DIMENSIONS AND WEIGHTS ARE NOMINAL AND SUBJECT TO MINOR VARIATIONS THAT MAY OCCUR DURING THE MANUFACTURING PROCESS

SBECDS
 Enhanced Container Delivery System (ECDS)

000000-R00

ISO 9001



CERTIFIED QUALITY MANAGEMENT SYSTEM

CONTRACT # GS-02F-0024P
GSA Advantage!