

SEA BOX[®]

Instant Repair Patch



Paint



Cut



All Weather



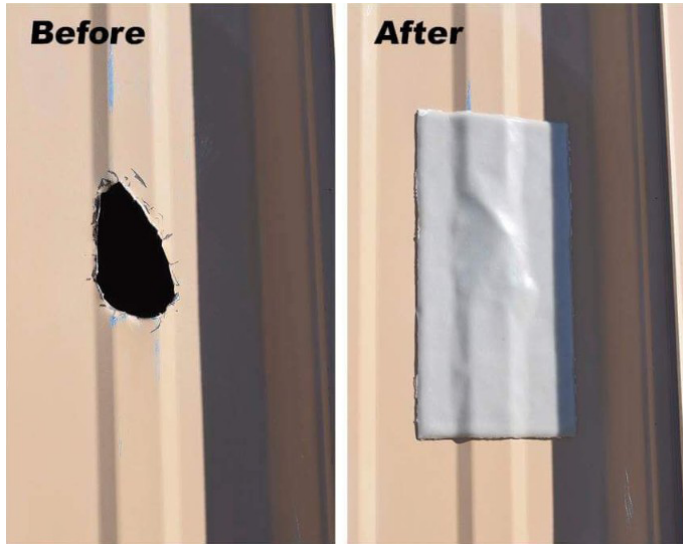
Waterproof



-40°F

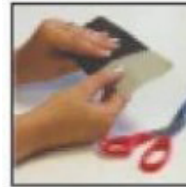


392°F



FEATURES

- Easy-to-use UV or sunlight activated patch
- Fiberglass-reinforced polyester material creates long lasting repair
- Perfect for making durable, water-tight cargo container repairs
- Extremely durable, fiberglass, reinforced polyester/plastic material
- Flexible and waterproof - weather and UV resistant
- Can be drilled, tapped, sanded and painted in less than an hour
- Resistant against many chemicals, solvents and oils
- Temperature resistant from -40F to 392F
- No shrinkage or expansion during the application or after curing
- Bonds to all surfaces except Polypropylene (PP)
- Fast curing - starting with 5 minutes depending on UV intensity
- Available in 3"x6", 6"x9" and 9"x12" sizes



Surface should be cleaned dry and free of any contaminates.

Remove black protective sheet.



Cut PATCH WORK into any size you want without exposing to UV or Sunlight.



Place remaining material back in black protective sheet.

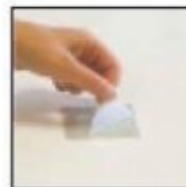


Remove white backing at to expose the sticky resin

Apply PATCH WORK to repair area with sticky side down.



Apply patch then remove transparent film backing on other side after application.



Press firmly and expose to UV or Sunlight. Curing times depend on UV intensity between 5 minutes (sunny) and 50 minutes (cloudy)



Drill, sand and/or paint when cured.

SBQP
Instant Repair Patch

050917-R01ND

ISO 9001



CERTIFIED QUALITY
MANAGEMENT SYSTEM

ALL DIMENSIONS AND WEIGHTS ARE NOMINAL AND SUBJECT TO MINOR VARIATIONS THAT MAY OCCUR DURING THE MANUFACTURING PROCESS