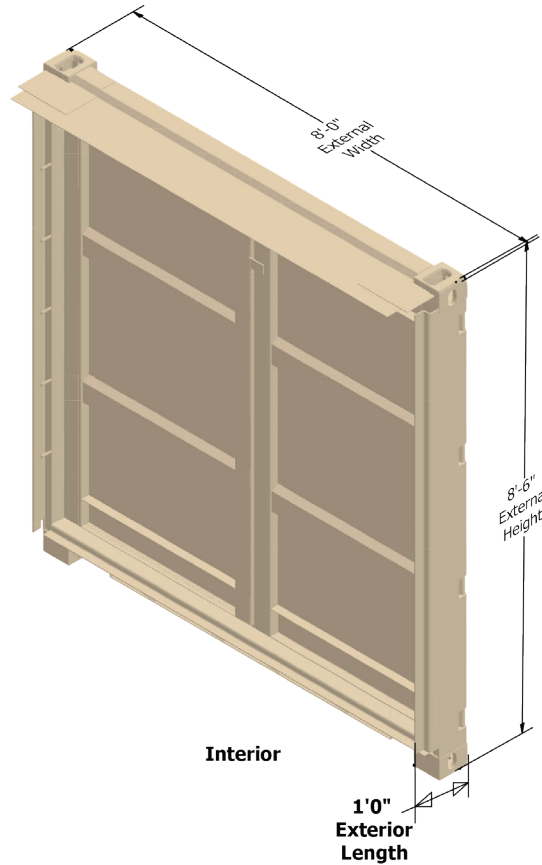
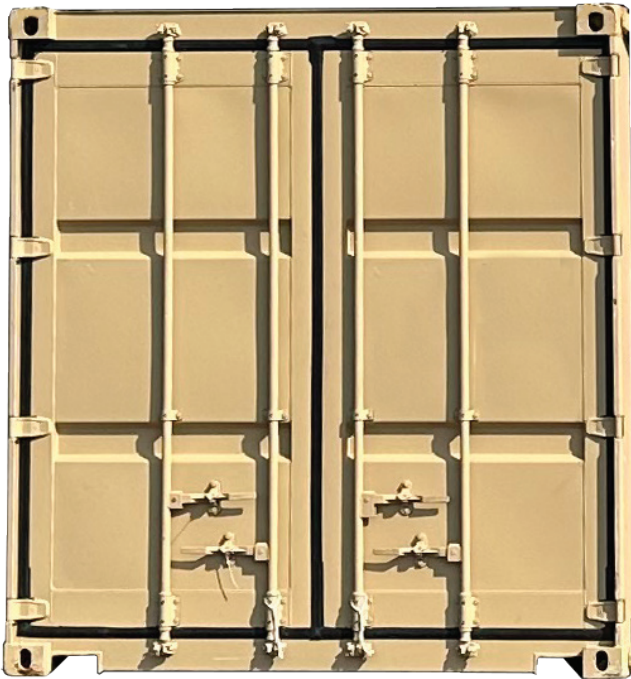


SEA BOX[®]

Rear End Door Subassembly

SB2861.6
Rear End Door Subassembly



STANDARD FEATURES

- Corrugated steel swing doors
- Door corner post tie downs (10 total)
- Corten Steel
- Appearances of panels may vary

012924-R00

ALL NEW CONTAINERS ARE MANUFACTURED TO THE LATEST ISO STANDARD

SB861.6	LENGTH (+0/-6)		HEIGHT (+0/-5)		WIDTH (+0/-5)		DOOR OPENING (+0/-5)	
	Nominal Exterior	Exterior	Interior	Exterior	Interior	Height	Width	
Ft. in.	1' 0"	8' 6"	7' 10 3/8"	8' 0"	7' 8 19/32"	7' 6 1/32"	7' 8 1/8"	
Metric	305	2,591	2,397	2,438	2,352	2,287	2,340	

TARE WEIGHT	
Lbs.	850
Kgs.	386

ALL DIMENSIONS AND WEIGHTS ARE NOMINAL AND SUBJECT TO MINOR VARIATIONS THAT MAY OCCUR DURING THE MANUFACTURING PROCESS

ISO 9001



CERTIFIED QUALITY
MANAGEMENT SYSTEM